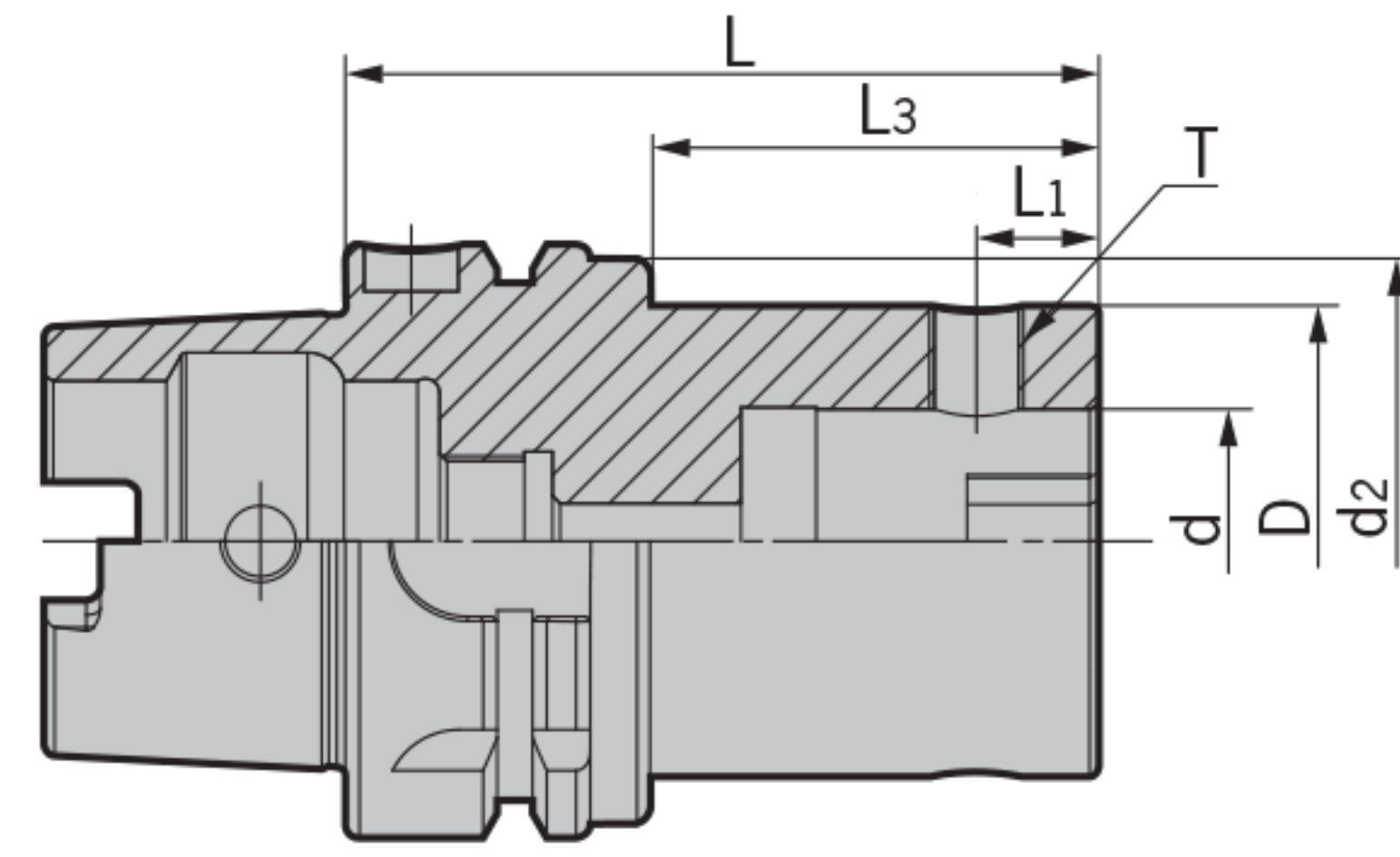
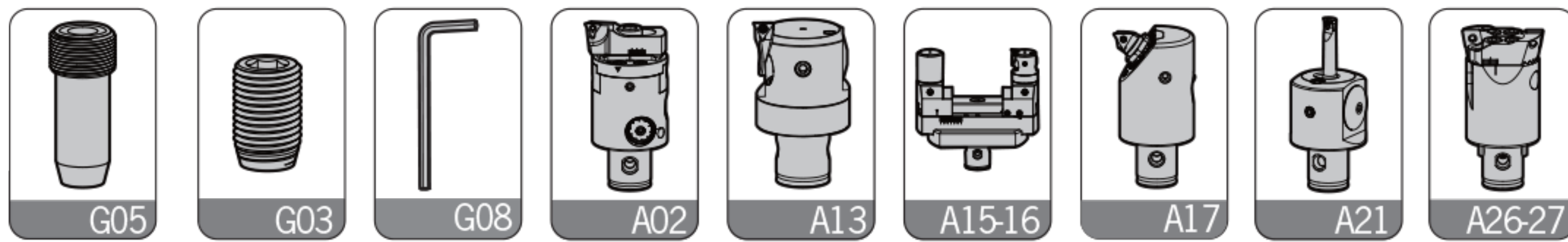
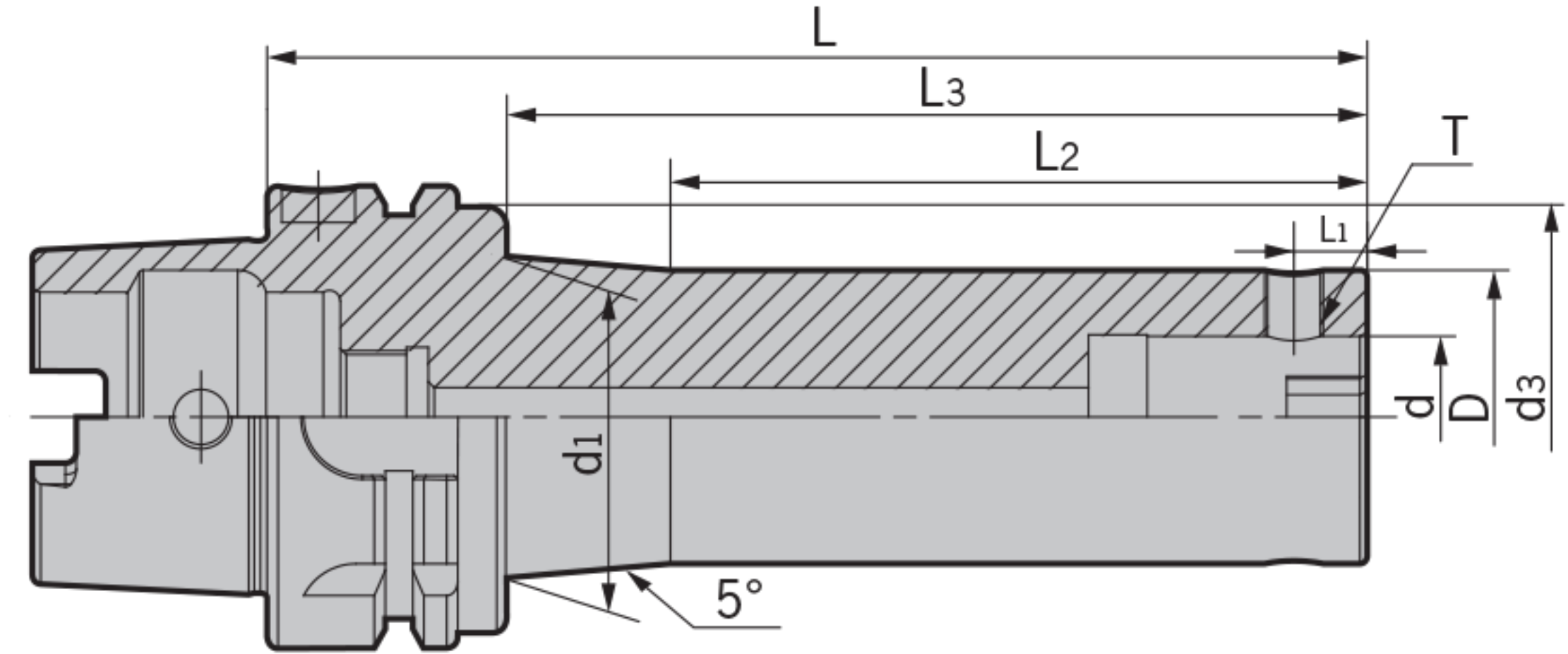


HSK-DCK

HSK-DCK Boring Adapter
HSK-DCK鑽頭刀柄



A



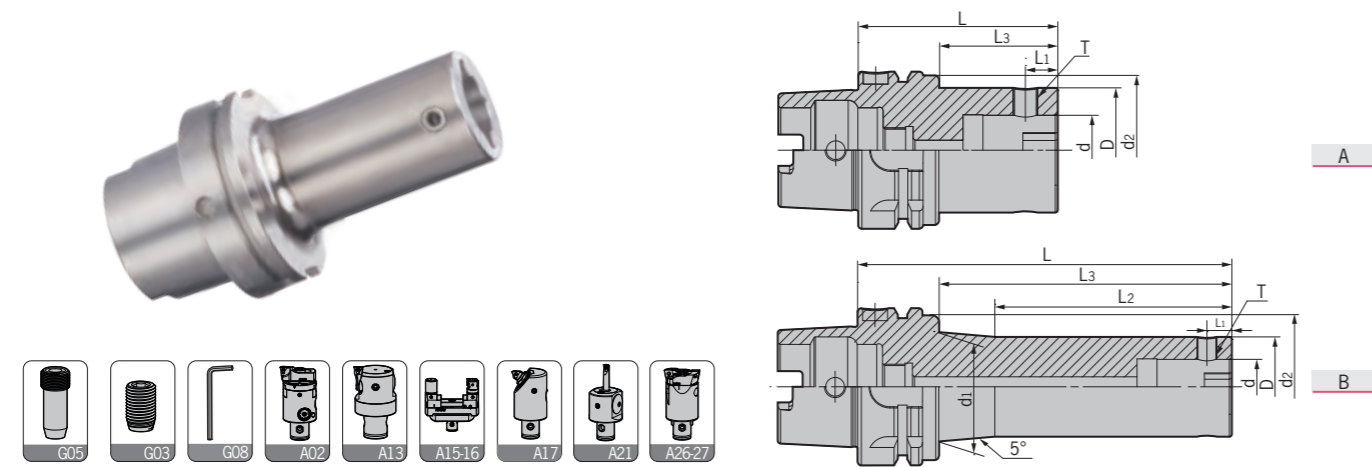
B

型號 Specification	圖示 Figure	D	d	d1	d2	L1	L2	L3	L	側固螺釘 Side-lock screw	L型扳手 Wrench	重量 Weight
HSK63A- DCK1-70	A	19	11	-	-	5.05	-	-	70	M050Z050-30P-D	L025	0.80
DCK1-100L	B	19	11	23.5	-	5.05	50	-	100	M050Z050-30P-D	L025	0.90
DCK2-75	A	24	14	-	-	6.45	-	-	75	M050Z060-30P-D	L025	0.90
DCK2-100	A	24	14	-	-	6.45	-	-	100	M050Z060-30P-D	L025	1.00
DCK2-130L	B	24	14	31	-	6.45	65	-	130	M050Z060-30P-D	L025	1.10
DCK3-80	A	31	18	-	-	7.9	-	-	80	M060Z090-30P-D	L03	1.00
DCK3-100	A	31	18	-	-	7.9	-	-	100	M060Z090-30P-D	L03	1.10
DCK3-135L	B	31	18	37	-	7.9	75	-	135	M060Z090-30P-D	L03	1.30
DCK3-165L	B	31	18	41	-	7.9	85	-	165	M060Z090-30P-D	L03	1.40
DCK4-70	A	39	22	-	-	10	-	-	70	M080Z120-30P-D	L04	1.00
DCK4-100	A	39	22	-	-	10	-	-	100	M080Z120-30P-D	L04	1.30
DCK4-150L	B	39	22	44	-	10	95	-	150	M080Z120-30P-D	L04	1.70
DCK4-170L	B	39	22	47.5	-	10	95	-	170	M080Z120-30P-D	L04	1.90
DCK5-80	A	50	28	-	-	13	-	-	80	M100Z160-30P-D	L05	1.40
DCK5-100	A	50	28	-	-	13	-	-	100	M100Z160-30P-D	L05	1.80
DCK5-150	A	50	28	-	-	13	-	-	150	M100Z160-30P-D	L05	2.20
DCK5-180	A	50	28	-	-	13	-	-	180	M100Z160-30P-D	L05	2.70
DCK6-100	A	64	36	-	-	16	-	-	100	M120Z200-30P-D	L06	2.20
DCK6-150	A	64	36	-	-	16	-	-	150	M120Z200-30P-D	L06	2.80
DCK6-180	A	64	36	-	-	16	-	-	180	M120Z200-30P-D	L06	3.30
DCK7-110	A	90	46	-	-	19.15	-	-	110	M200Z290-30P-D	L10	3.50
DCK7-150	A	90	46	-	-	19.15	-	-	150	M200Z290-30P-D	L10	5.20

轉下頁
See next page

HSK-DCK

HSK-DCK Boring Adapter
HSK-DCK鑽頭刀柄



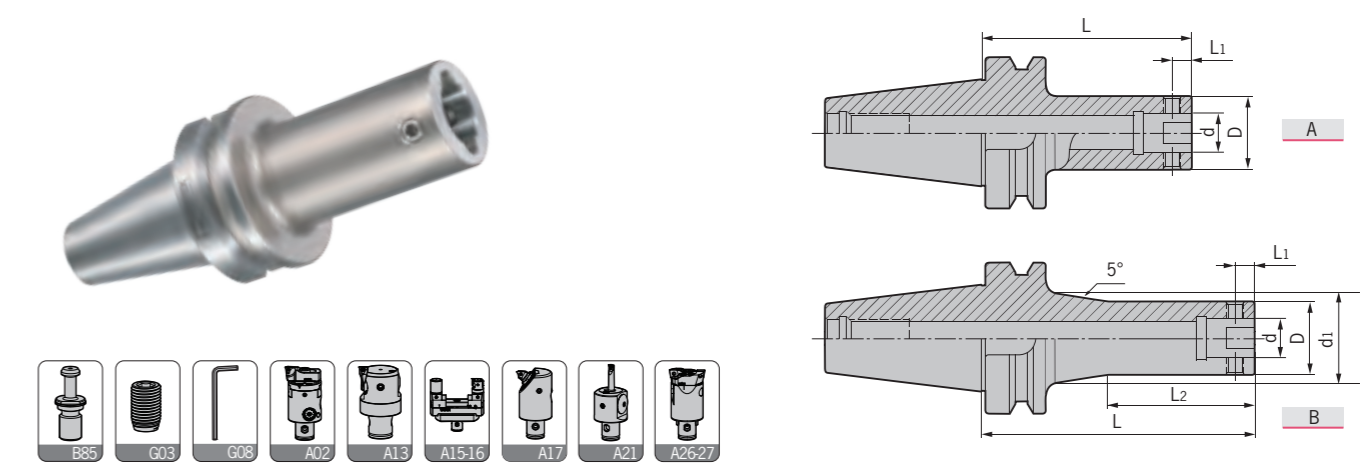
型號 Specification	圖示 Figure	D	d	d ₁	d ₂	L ₁	L ₂	L ₃	L	側固螺釘 Side-lock screw	L型扳手 Wrench	重量 Weight
HSK100A-												
DCK1-80	A	19	11	-	65	5.05	-	43	80	M050Z050-30P-D	L025	2.40
DCK1-115L	B	19	11	24	65	5.05	50	78	115	M050Z050-30P-D	L025	2.50
DCK1-145L	B	19	11	27.5	65	5.05	60	108	145	M050Z050-30P-D	L025	2.60
DCK2-80	A	24	14	-	65	6.45	-	43	80	M050Z060-30P-D	L025	2.45
DCK2-105	A	24	14	-	65	6.45	-	68	105	M050Z060-30P-D	L025	2.50
DCK2-135L	B	24	14	30	65	6.45	65	98	135	M050Z060-30P-D	L025	2.60
DCK2-165L	B	24	14	33.5	65	6.45	75	128	165	M050Z060-30P-D	L025	2.70
DCK3-85	A	31	18	-	65	7.9	-	46	85	M060Z090-30P-D	L03	2.60
DCK3-110	A	31	18	-	65	7.9	-	71	110	M060Z090-30P-D	L03	2.70
DCK3-140L	B	31	18	35.5	-	7.9	75	101	140	M060Z090-30P-D	L03	2.80
DCK3-170L	B	31	18	41	-	7.9	85	-	170	M060Z090-30P-D	L03	2.90
DCK4-100	A	39	22	-	-	10	-	-	100	M080Z120-30P-D	L04	2.80
DCK4-160L	B	39	22	47	-	10	85	-	160	M080Z120-30P-D	L04	3.50
DCK4-205L	B	39	22	50.5	-	10	110	-	205	M080Z120-30P-D	L04	4.00
DCK5-90	A	50	28	-	-	13	-	-	90	M100Z160-30P-D	L05	3.50
DCK5-165	A	50	28	-	-	13	-	-	165	M100Z160-30P-D	L05	4.20
DCK5-210L	B	50	28	61	-	13	120	-	210	M100Z160-30P-D	L05	4.80
DCK5-270L	B	50	28	69.5	-	13	130	-	270	M100Z160-30P-D	L05	5.60
DCK6-85	A	64	36	-	-	16	-	-	85	M120Z200-30P-D	L06	4.20
DCK6-155	A	64	36	-	-	16	-	-	155	M120Z200-30P-D	L06	5.00
DCK6-215	A	64	36	-	-	16	-	-	215	M120Z200-30P-D	L06	5.80
DCK6-250	A	64	36	-	-	16	-	-	250	M120Z200-30P-D	L06	6.20
DCK6-300L	B	64	36	80	-	16	180	-	300	M120Z200-30P-D	L06	7.10
DCK7-125	A	90	46	-	-	19.15	-	-	125	M200Z290-30P-D	L10	5.22
DCK7-200	A	90	46	-	-	19.15	-	-	200	M200Z290-30P-D	L10	6.88
DCK7-275	A	90	46	-	-	19.15	-	-	275	M200Z290-30P-D	L10	8.26

特點 / Feature

- 整支通孔，利于出水及抗振。■可共用并互容于大多数的“CK”系列。
- 側固螺絲與鍵槽成90度，確保切削機的退刀相位。
- 側固螺絲鎖固時，請使用防卡油，以免鑽孔時因扭力過大，導致螺絲卡死難以拆裝。
- The whole bar with through holes, be useful for coolant and anti-shanking. ■Be compatible with all "CK" series.
- Side lock screw is at right angles to key slot, to make sure that the replacing holders in CNC machine are always in phase.
- When side lock screw fastened, please use lubrication oil to avoid dead fastening.

BT-DCK

BT-DCK Boring Adapter
BT-DCK鑽頭刀柄

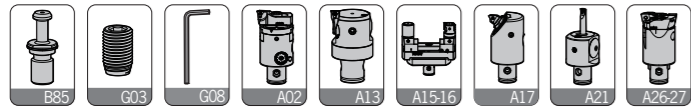
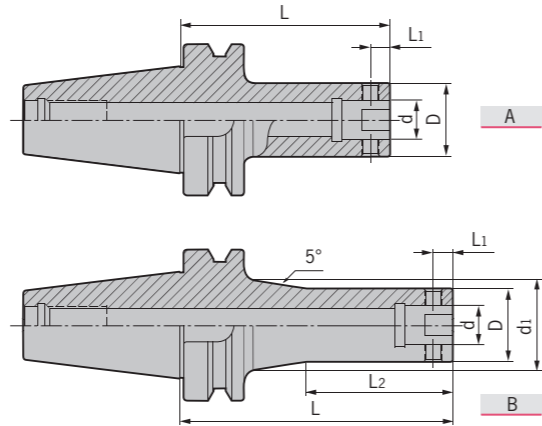


型號 Specification	圖示 Figure	D	d ₁	d	L ₁	L ₂	L	側固螺釘 Side-lock screw	L型扳手 Wrench	重量 Weight
BT30-										
DCK1-55	A	19	-	11	5.05	-	55	M050Z050-30P-D	L025	0.42
DCK1-70	A	19	-	11	5.05	-	70	M050Z050-30P-D	L025	0.45
DCK2-80	A	24	-	14	6.62	-	80	M050Z060-30P-D	L025	0.54
DCK3-80	A	31	-	18	8	-	80	M060Z090-30P-D	L03	0.68
DCK4-70	A	39	-	22	10	-	70	M080Z120-30P-D	L04	0.68
DCK5-70	A	50	-	28	13	-	70	M100Z160-30P-D	L05	0.88
DCK6-60	A	64	-	36	16	-	60	M120Z200-30P-D	L06	0.89
BT40-										
DCK1-70	A	19	-	11	5.05	-	70	M050Z050-30P-D	L025	1.03
DCK1-100L	B	19	20.7	11	5.05	60	100	M050Z050-30P-D	L025	1.10
DCK1-130L	B	19	25.5	11	5.05	60	130	M050Z050-30P-D	L025	1.18
DCK2-75	A	24	-	14	6.62	-	75	M050Z060-30P-D	L025	1.10
DCK2-100	A	24	-	14	6.62	-	100	M050Z060-30P-D	L025	1.18
DCK2-130L	B	24	30	14	6.62	65	130	M050Z060-30P-D	L025	1.33
DCK2-160L	B	24	33.6	14	6.62	75	160	M050Z060-30P-D	L025	1.49
DCK3-80	A	31	-	18	8	-	80	M060Z090-30P-D	L03	1.22
DCK3-100	A	31	-	18	8	-	100	M060Z090-30P-D	L03	1.32
DCK3-135L	B	31	34.5	18	8	75	135	M060Z090-30P-D	L03	1.54
DCK3-165L	B	31	39.7	18	8	85	165	M060Z090-30P-D	L03	1.76
DCK4-70	A	39	-	22	10	-	70	M080Z120-30P-D	L04	1.21
DCK4-100	A	39	-	22	10	-	100	M080Z120-30P-D	L04	1.46
DCK4-150L	B	39	43.4	22	10	85	150	M080Z120-30P-D	L04	1.90
DCK4-170L	B	39	46.9	22	10	95	170	M080Z120-30P-D	L04	2.16
DCK5-60	A	50	-	28	13	-	60	M100Z160-30P-D	L05	1.22
DCK5-80	A	50	-	28	13	-	80	M100Z160-30P-D	L05	1.52
DCK5-100	A	50	-	28	13	-	100	M100Z160-30P-D	L05	1.80
DCK5-150	A	50	-	28	13	-	150	M100Z160-30P-D	L05	2.52
DCK5-180	A	50	-	28	13	-	180	M100Z160-30P-D	L05	2.90
DCK6-55	A	64	-	36	16	-	55	M120Z200-30P-D	L06	1.22
DCK6-100	A	64	-	36	16	-	100	M120Z200-30P-D	L06	2.29
DCK6-150	A	64	-	36	16	-	150	M120Z200-30P-D	L06	3.50
DCK6-180	A	64	-	36	16	-	180	M120Z200-30P-D	L06	4.22
DCK7-100	A	90	-	46	19.15	-	100	M200Z290-30P-D	L10	3.50
DCK7-150	A	90	-	46	19.15	-	150	M200Z290-30P-D	L10	5.50

轉下頁
See next page

BT-DCK

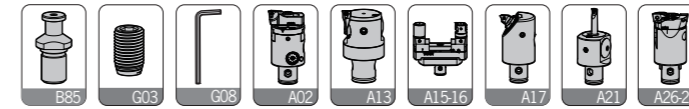
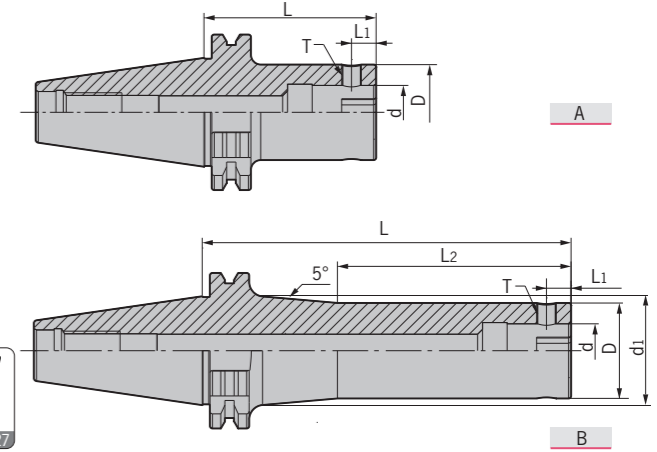
BT-DCK Boring Adapter
BT-DCK鑽頭刀柄



型號 Specification	圖示 Figure	D	d ₁	d	L ₁	L ₂	L	側固螺釘 Side-lock screw	L型扳手 Wrench	重量 Weight
BT50- DCK1-80	A	19	-	11	5.05	-	80	M050Z050-30P-D	L025	3.20
DCK1-115L	B	19	20.7	11	5.05	50	115	M050Z050-30P-D	L025	3.73
DCK1-145L	B	19	26	11	5.05	60	145	M050Z050-30P-D	L025	4.20
DCK2-80	A	24	-	14	6.62	-	80	M050Z060-30P-D	L025	3.68
DCK2-105	A	24	-	14	6.62	-	105	M050Z060-30P-D	L025	3.78
DCK2-135L	B	24	26.6	14	6.62	65	135	M050Z060-30P-D	L025	3.89
DCK2-165L	B	24	31.9	14	6.62	75	165	M050Z060-30P-D	L025	4.08
DCK3-85	A	31	-	18	8	-	85	M060Z090-30P-D	L03	3.80
DCK3-110	A	31	-	18	8	-	110	M060Z090-30P-D	L03	3.95
DCK3-140L	B	31	32.7	18	8	75	140	M060Z090-30P-D	L03	4.09
DCK3-170L	B	31	38	18	8	85	170	M060Z090-30P-D	L03	4.31
DCK4-100	A	39	-	22	10	-	100	M080Z120-30P-D	L04	3.98
DCK4-160L	B	39	42.5	22	10	85	160	M080Z120-30P-D	L04	4.50
DCK4-205L	B	39	50	22	10	95	205	M080Z120-30P-D	L04	5.13
DCK5-90	A	50	-	28	13	-	90	M100Z160-30P-D	L05	4.30
DCK5-165	A	50	-	28	13	-	165	M100Z160-30P-D	L05	5.20
DCK5-210L	B	50	57.8	28	13	120	210	M100Z160-30P-D	L05	5.92
DCK5-270L	B	50	68.4	28	13	120	270	M100Z160-30P-D	L05	7.23
DCK6-85	A	64	-	36	16	-	85	M120Z200-30P-D	L06	4.28
DCK6-155	A	64	-	36	16	-	155	M120Z200-30P-D	L06	5.97
DCK6-215	A	64	-	36	16	-	215	M120Z200-30P-D	L06	7.43
DCK6-250	A	64	-	36	16	-	250	M120Z200-30P-D	L06	8.27
DCK6-300L	B	64	80.5	36	16	160	300	M120Z200-30P-D	L06	10.21
DCK6-350L	B	64	90	36	16	160	350	M120Z200-30P-D	L06	12.90
DCK7-85	A	90	-	46	19.15	-	85	M200Z290-30P-D	L10	4.96
DCK7-150	A	90	-	46	19.15	-	150	M200Z290-30P-D	L10	6.52
DCK7-210	A	90	-	46	19.15	-	210	M200Z290-30P-D	L10	8.55
DCK7-250	A	90	-	46	19.15	-	250	M200Z290-30P-D	L10	10.35
DCK7-300	A	90	-	46	19.15	-	300	M200Z290-30P-D	L10	12.55
DCK7-350	A	90	-	46	19.15	-	350	M200Z290-30P-D	L10	13.25

SK-DCK

SK-DCK Boring Adapter
SK-DCK鑽頭刀柄



型號 Specification	圖示 Figure	D	d ₁	d	L ₁	L ₂	L	側固螺釘 Side-lock screw	L型扳手 Wrench	重量 Weight
SK30- DCK1-55	A	19	-	11	5.05	-	55	M050Z050-30P-D	L025	0.42
DCK1-70	A	19	-	11	5.05	-	70	M050Z050-30P-D	L025	0.45
DCK2-80	A	24	-	14	6.62	-	80	M050Z060-30P-D	L025	0.54
DCK3-80	A	31	-	18	8	-	80	M060Z090-30P-D	L03	0.68
DCK4-70	A	39	-	22	10	-	70	M080Z120-30P-D	L04	0.68
DCK5-70	A	50	-	28	13	-	70	M100Z160-30P-D	L05	0.88
DCK6-80	A	64	-	36	16	-	80	M120Z200-30P-D	L06	0.89
SK40- DCK1-70	A	19	-	11	5.05	-	70	M050Z050-30P-D	L025	1.03
DCK1-100L	B	19	20.7	11	5.05	60	100	M050Z050-30P-D	L025	1.10
DCK2-75	A	24	-	14	6.62	-	75	M050Z060-30P-D	L025	1.10
DCK2-100	A	24	-	14	6.62	-	100	M050Z060-30P-D	L025	1.18
DCK2-130L	B	24	28.3	14	6.62	75	130	M050Z060-30P-D	L025	1.33
DCK2-160L	B	24	33.6	14	6.62	75	160	M050Z060-30P-D	L025	1.49
DCK3-80	A	31	-	18	8	-	80	M060Z090-30P-D	L03	1.22
DCK3-100	A	31	-	18	8	-	100	M060Z090-30P-D	L03	1.32
DCK3-135L	B	31	34.5	18	8	85	135	M060Z090-30P-D	L03	1.54
DCK3-165L	B	31	39.7	18	8	85	165	M060Z090-30P-D	L03	1.76
DCK4-70	A	39	-	22	10	-	70	M080Z120-30P-D	L04	1.21
DCK4-100	A	39	-	22	10	-	100	M080Z120-30P-D	L04	1.46
DCK4-150L	B	39	43.4	22	10	95	150	M080Z120-30P-D	L04	1.90
DCK4-170L	B	39	46.9	22	10	95	170	M080Z120-30P-D	L04	2.16
DCK5-80	A	50	-	28	13	-	80	M100Z160-30P-D	L05	1.52
DCK5-100	A	50	-	28	13	-	100	M100Z160-30P-D	L05	1.80
DCK5-150	A	50	-	28	13	-	150	M100Z160-30P-D	L05	2.52
DCK5-180	A	50	-	28	13	-	180	M100Z160-30P-D	L05	2.90
DCK6-90	A	64	-	36	16	-	90	M120Z200-30P-D	L06	1.22
DCK6-150	A	64	-	36	16	-	150	M120Z200-30P-D	L06	3.50
DCK6-180	A	64	-	36	16	-	180	M120Z200-30P-D	L06	4.22
DCK7-100	A	90	-	46	19.15	-	100	M200Z290-30P-D	L10	3.50
DCK7-150	A	90	-	46	19.15	-	150	M200Z290-30P-D	L10	5.50

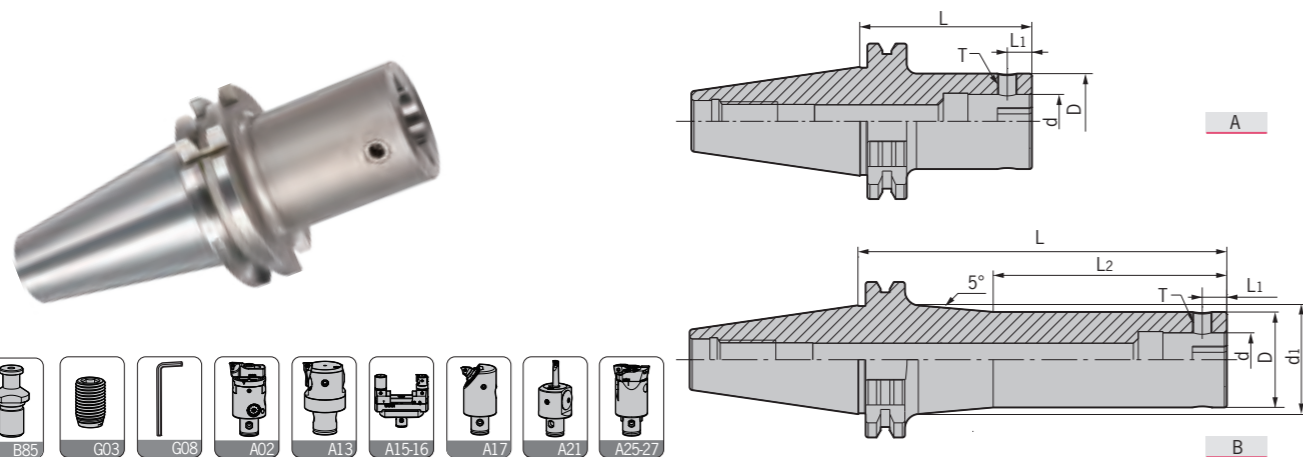
特點 / Feature

- 整支通孔，利于出水及抗振。■可共用并互容于大多數的“CK”系列。
- 側固螺絲與鍵槽成90度，確保切削機的退刀相位。
- 側固螺絲鎖固時，請使用防卡油，以免鑽孔時因扭力過大，導致螺絲卡死難以拆裝。
- The whole bar with through holes, be useful for coolant and anti-shanking. ■Be compatible for all "CK" series.
- Side lock screw is at right angles to key slot, to make sure that the replacing holders in CNC machine are always in phase.
- When side lock screw fastened, please use lubrication oil to avoid dead fastening.

轉下頁
See next page

SK-DCK

SK-DCK Boring Adapter
SK-DCK鑽頭刀柄



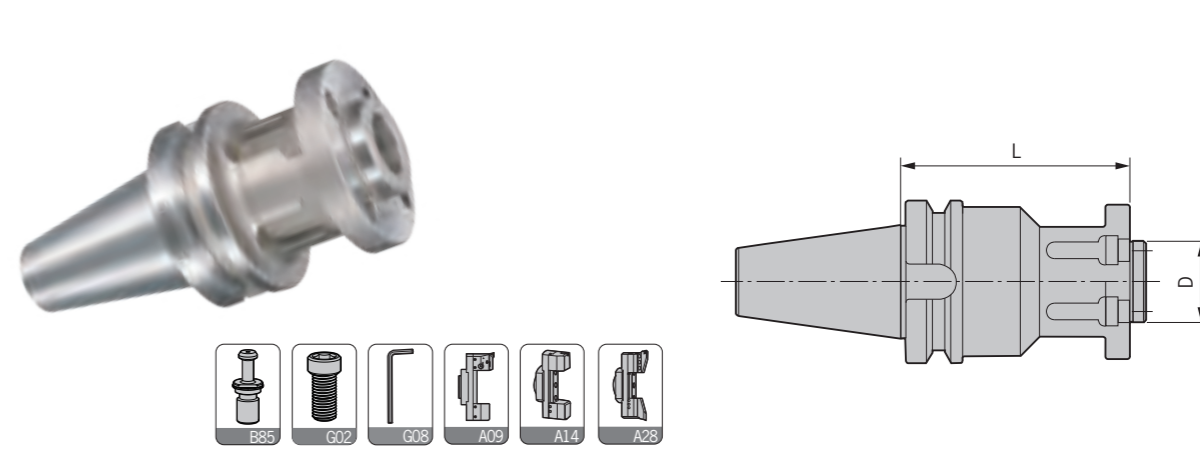
型號 Specification	圖示 Figure	D	d ₁	d	L ₁	L ₂	L	側固螺釘 Side-lock screw	L型扳手 Wrench	重量 Weight
SK50- DCK1-80	B	19	20.7	11	5.05	-	80	M050Z050-30P-D	L025	3.60
DCK1-115L	B	19	20.7	11	5.05	60	115	M050Z050-30P-D	L025	3.73
DCK1-145L	B	19	26	11	5.05	60	145	M050Z050-30P-D	L025	4.20
DCK2-80	A	24	-	14	6.62	-	80	M050Z060-30P-D	L025	3.60
DCK2-105	A	24	-	14	6.62	-	105	M050Z060-30P-D	L025	3.78
DCK2-135L	B	24	26.6	14	6.62	75	135	M050Z060-30P-D	L025	3.89
DCK2-165L	B	24	31.9	14	6.62	75	165	M050Z060-30P-D	L025	4.08
DCK3-85	A	31	-	18	8	-	85	M060Z090-30P-D	L03	3.80
DCK3-110	A	31	-	18	8	-	110	M060Z090-30P-D	L03	3.95
DCK3-140L	B	31	32.7	18	8	85	140	M060Z090-30P-D	L03	4.09
DCK3-170L	B	31	38	18	8	85	170	M060Z090-30P-D	L03	4.31
DCK4-100	A	39	-	22	10	-	100	M080Z120-30P-D	L04	3.98
DCK4-160L	B	39	42.5	22	10	95	160	M080Z120-30P-D	L04	4.50
DCK4-205L	B	39	50	22	10	95	205	M080Z120-30P-D	L04	5.13
DCK5-90	A	50	-	28	13	-	90	M100Z160-30P-D	L05	4.30
DCK5-165	A	50	-	28	13	-	165	M100Z160-30P-D	L05	5.20
DCK5-210L	B	50	57.8	28	13	120	210	M100Z160-30P-D	L05	5.92
DCK5-270L	B	50	68.4	28	13	120	270	M100Z160-30P-D	L05	7.23
DCK6-85	A	64	-	36	16	-	85	M120Z200-30P-D	L06	4.28
DCK6-155	A	64	-	36	16	-	155	M120Z200-30P-D	L06	5.97
DCK6-215	A	64	-	36	16	-	215	M120Z200-30P-D	L06	7.43
DCK6-250	A	64	-	36	16	-	250	M120Z200-30P-D	L06	8.27
DCK6-300L	B	64	80.5	36	16	160	300	M120Z200-30P-D	L06	10.21
DCK7-85	A	90	-	46	19.15	-	85	M200Z290-30P-D	L10	4.96
DCK7-150	A	90	-	46	19.15	-	150	M200Z290-30P-D	L10	6.52
DCK7-210	A	90	-	46	19.15	-	210	M200Z290-30P-D	L10	8.55
DCK7-250	A	90	-	46	19.15	-	250	M200Z290-30P-D	L10	10.35
DCK7-300	A	90	-	46	19.15	-	300	M200Z290-30P-D	L10	12.55
DCK7-350	A	90	-	46	19.15	-	350	M200Z290-30P-D	L10	13.25

特點 / Feature

- 整支通孔，利于出水及抗振。■可共用并互容于大多数的“CK”系列。
- 側固螺絲與鍵槽成90度，確保切削機的退刀相位。
- 側固螺絲鎖固時，請使用防卡油，以免鑽孔時因扭力過大，導致螺絲卡死難以拆裝。
- The whole bar with through holes, be useful for coolant and anti-shanking. ■Be compatible with all "CK" series.
- Side lock screw is at right angles to key slot, to make sure that the replacing holders in CNC machine are always in phase.
- When side lock screw fastened, please use lubrication oil to avoid dead fastening.

BST/NBH2084

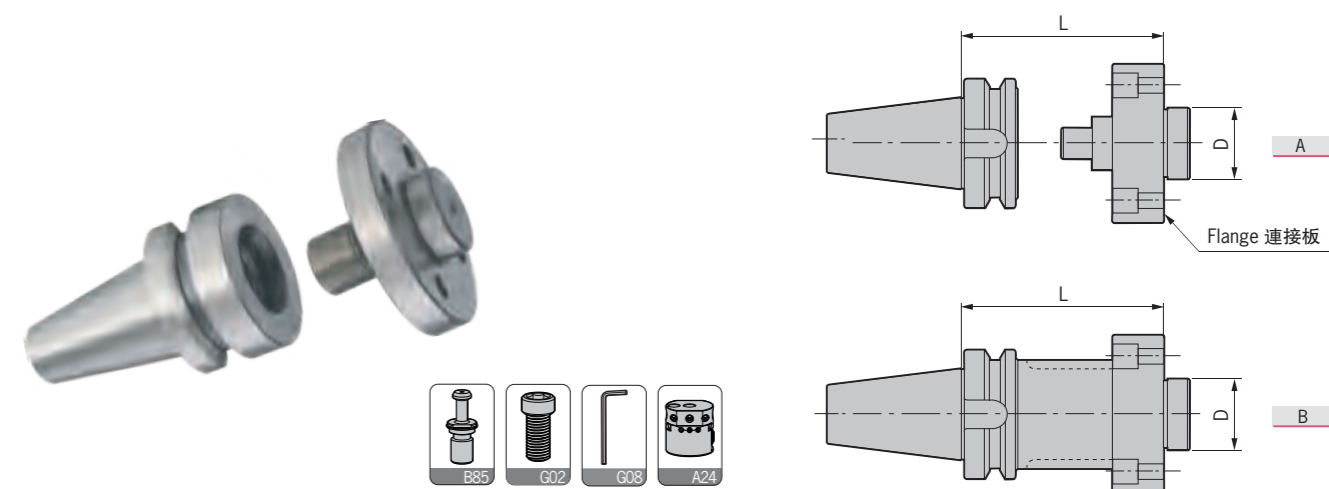
BST Boring Adapter
BST鑽頭刀柄



型號 Specification	D	L	緊固螺釘 Locking screw	重量 Weight
HSK100A- BST-100	50	100	E120U400-D	3.96
BST-150	50	150	E120U400-D	4.59
BST-200	50	200	E120U400-D	5.48
BST-250	50	250	E120U400-D	7.52
BST-300	50	300	E120U400-D	10.32
BT40- BST-100	50	100	E120U400-D	2.90
BST-150	50	150	E120U400-D	4.24

型號 Specification	D	L	緊固螺釘 Locking screw	重量 Weight
BT50- BST-100	50	100	E120U400-D	5.50
BST-150	50	150	E120U400-D	6.38
BST-200	50	200	E120U400-D	7.61
BST-250	50	250	E120U400-D	10.44
BST-300	50	300	E120U400-D	12.37
BST-350	50	350	E120U400-D	14.33
SK50- BST-100	50	100	E120U400-D	5.50
BST-150	50	150	E120U400-D	6.38
BST-200	50	200	E120U400-D	7.61

NBH2084 Boring Adapter
NBH2084鑽頭刀柄

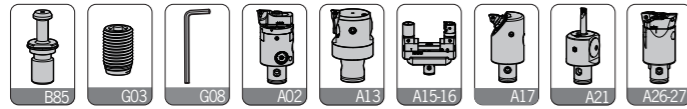
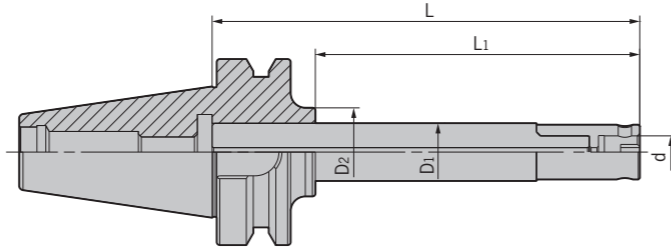


型號 Specification	D	L	鎖緊螺釘 Locking screw	L型扳手 Wrench	重量 Weight
BT40-NBH-A50	35	50	E080U200-D	L06	1.78
BT50-NBH-A50	35	50	E080U200-D	L06	4.16
NBH-FP60	35	Flange	E080U200-D	L06	0.60
BT40-NBH-B100	35	100	E080U300-D	L06	2.23
BT50-NBH-B100	35	100	E080U300-D	L06	4.84

型號 Specification	D	L	鎖緊螺釘 Locking screw	L型扳手 Wrench	重量 Weight
BT50- NBH-B165	35	165	E080U300-D	L06	6.23
NBH-B200	35	200	E080U300-D	L06	7.01
NBH-B250	35	250	E080U300-D	L06	7.96
NBH-B300	35	300	E080U300-D	L06	9.07

DSCK/DCK-ABS

DSCK Carbide Boring Arbor
DSCK抗振鎢鋼鏜頭刀柄

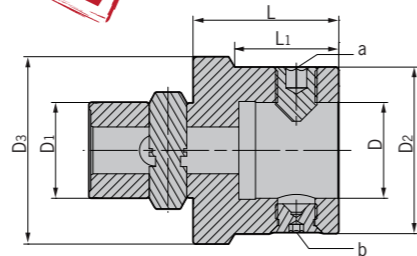
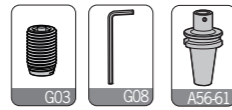


型號 Specification	D1	D2	d	L1	L	側固螺釘 Side-lock screw	重量 Weight
BT40- DSCK1-150	19.5	30	11	115	150	M050Z050-30P-D	1.56
DSCK2-190	24	35	14	155	190	M050Z050-30P-D	1.92
BT50- DSCK1-150	19.5	30	11	115	150	M050Z050-30P-D	4.07
DSCK2-200	24	35	14	155	200	M050Z050-30P-D	4.84
DSCK3-230	31	42	18	185	230	M060Z075-30P-D	5.28
DSCK4-300	40	50	22	255	300	M080Z075-30P-D	6.60

注意：標準報價不含CBH鏜頭，需另外單獨購買。
Notice: Quotation not included CBH boring head, shall be ordered separately.

Adapter from DCK to ABS Type Connection
DCK-ABS接口轉換接柄

NEW

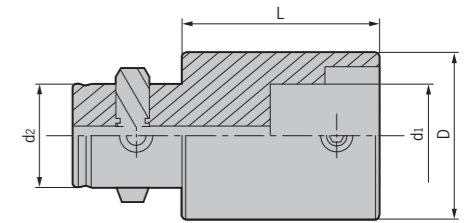
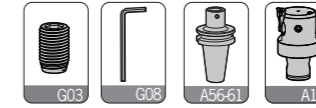


型號 Specification	D	D1	D2	D3	L	L1	a	b	L型扳手 Wrench	重量 Weight
DCK 2-ABS25	13	14	25	24	35	20	M060Z085P-W	M060Z050P-N	L03	0.10
3-ABS32	16	18	32	31	40	25	M080Z110P-W	M080Z065P-N	L04	0.12
4-ABS40	20	22	40	39	45	30	M100Z140P-W	M100Z080P-N	L05	0.29
5-ABS50	28	28	50	50	50	35	M120Z165P-W	M120Z085P-N	L06	0.65
6-ABS63	34	36	63	64	55	40	M160Z205P-W	M160Z120P-N	L08	1.65
6-ABS80	46	36	80	64	60	45	M200Z260P-W	M200Z138P-N	L10	2.23
7-ABS80	46	46	80	90	70	55	M200Z260P-W	M200Z138P-N	L10	2.88

注意：此轉換接柄用于把ABS接口鏜頭安裝于DCK接口的鏜刀柄上。
Notice: With this adapter, DCK boring holder can assemble boring tools with ABS connection.

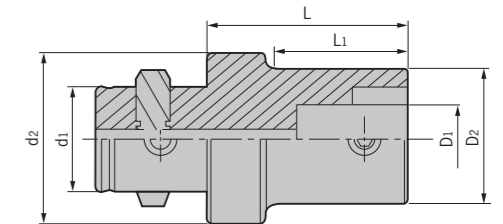
DCK

DCK Extension
DCK等徑延長接柄



型號 Specification	D	d1	d2	L	側固螺釘 Side-lock screw	L型扳手 Wrench	重量 Weight
DCK 1-1-30	19	11	11	30	M050Z050-30P-D	L025	0.06
2-2-30	24	14	14	30	M050Z060-30P-D	L025	0.09
3-3-30	31	18	18	30	M060Z090-30P-D	L03	0.14
4-4-45	39	22	22	45	M080Z120-30P-D	L04	0.29
4-4-60	39	22	22	60	M080Z120-30P-D	L04	0.47
5-5-60	50	28	28	60	M100Z160-30P-D	L05	0.75
5-5-90	50	28	28	90	M100Z160-30P-D	L05	1.18
6-6-60	64	36	36	60	M120Z200-30P-D	L06	1.46
6-6-100	64	36	36	100	M120Z200-30P-D	L06	2.35
7-7-105	90	46	46	105	M200Z300-30P-D	L10	5.28

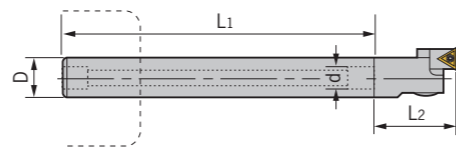
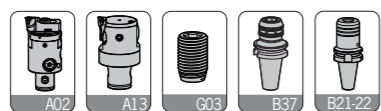
DCK Reducer
DCK異徑轉換接柄 (大接小)



型號 Specification	D1	D2	d1	d2	L1	L	側固螺釘 Side-lock screw	L型扳手 Wrench	重量 Weight
DCK 2-1-36	11	19	14	24	30	36	M050Z050-30P-D	L025	0.08
3-1-41	11	19	18	31	30	41	M050Z050-30P-D	L025	0.12
3-2-37	14	24	18	31	25	37	M050Z060-30P-D	L025	0.13
4-1-58	11	19	22	39	40	58	M050Z050-30P-D	L025	0.24
4-2-50	14	24	22	39	36	50	M050Z060-30P-D	L025	0.22
4-3-50	18	31	22	39	37	50	M060Z090-30P-D	L03	0.30
5-1-60	11	19	28	50	40	60	M050Z050-30P-D	L025	0.38
5-2-54	14	24	28	50	35	54	M050Z060-30P-D	L025	0.38
5-2-74	14	24	28	50	55	74	M050Z060-30P-D	L025	0.45
5-3-47	18	31	28	50	29	47	M060Z090-30P-D	L03	0.46
5-3-72	18	31	28	50	54	72	M060Z090-30P-D	L03	0.54
5-4-42	22	39	28	50	25	42	M080Z120-30P-D	L04	0.43
5-4-67	22	39	28	50	50	67	M080Z120-30P-D	L04	0.62
6-1-70	11	19	36	64	40	70	M050Z050-30P-D	L025	0.90
6-2-63	14	24	36	64	45	63	M050Z060-30P-D	L025	0.66
6-2-93	14	24	36	64	75	93	M050Z060-30P-D	L025	0.71
6-3-56	18	31	36	64	39	56	M060Z090-30P-D	L03	0.70
6-3-96	18	31	36	64	79	96	M060Z090-30P-D	L03	0.91
6-4-51	22	39	36	64	35	51	M080Z120-30P-D	L04	0.76
6-4-101	22	39	36	64	85	101	M080Z120-30P-D	L04	1.19
6-5-41	28	50	36	64	25	41	M100Z160-30P-D	L05	0.72
6-5-91	28	50	36	64	75	91	M100Z160-30P-D	L05	1.46
7-6-106	36	64	46	90	99	106	M120Z200-30P-D	L06	3.12

SCB/SSB

SCB Solid Carbide Boring Holder
SCB超硬整體碳化鎢鋼鏜刀杆

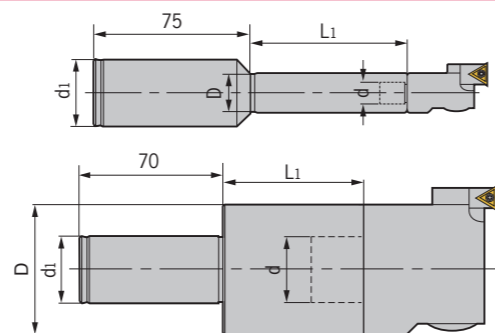
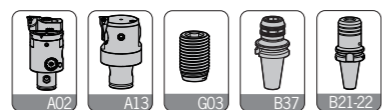


型號 Specification	D	d	L1	L2	組合鏜頭 Boring head	鏜孔範圍 Boring range	重量 Weight
SCB- C19-DCK1-150	19	11	150	32.5	CBH20-36	20-36	0.50
C19-DCK1-200	19	11	200	32.5			0.70
C19-DCK1-250	19	11	250	32.5			0.90
C24-DCK2-200	24	14	200	35.5	FBH25/CBH25-47	29-38/25-47	1.00
C24-DCK2-250	24	14	250	35.5			1.20
C24-DCK2-300	24	14	300	35.5			1.50
C31-DCK3-250	31	18	250	40	FBH32/CBH32-60	36-52/32-60	1.80
C31-DCK3-300	31	18	300	40			2.20
C31-DCK3-400	31	18	400	40			3.00

特點 / Feature

- 超硬碳化鎢制鏜刀杆，使用高韌性配方製造，堅韌耐用，實現高硬度、高剛性、高抗震性，可施行超深孔加工（8D）。
- 各種規格均有內部水孔，深孔加工時排屑及冷卻效果良好。
- 直柄結構，加工深度可依加工需求自行調整。
- Solid tungsten carbide holder provides high rigidity, strong shaking resistance and deep boring depth(≤8D).
- Good chip remove and cooling performance due to internal cooling hole design.
- Straight shank makes the setting of boring depth easy.

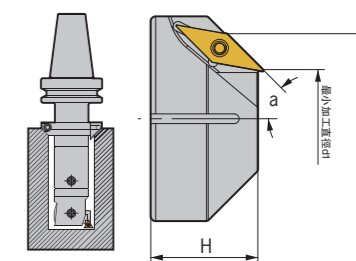
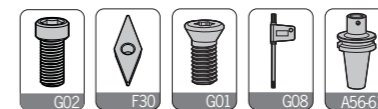
SSB Boring Holder
SSB直柄鏜刀杆



型號 Specification	D	d	d1	L1	組合鏜頭 Boring head	重量 Weight
SSB- C32-DCK1-75	19	11	32	75	CBH20-36、DYD20-22、DYD22-29	0.52
C32-DCK2-70	24	14	32	70	FBH25、CBH25-47、DBH25-33、DYD29-38	0.59
C32-DCK2-120	24	14	32	120		0.85
C32-DCK3-70	31	18	32	70	FBH32、CBH32-60、DBH32-42、DYD38-50	0.73
C32-DCK3-120	31	18	32	120		1.01
C32-DCK4-60	39	22	32	60	FBH40、CBH41-74、DBH40-55、DYD48-65	0.77
C32-DCK4-110	39	22	32	110		1.19
C32-DCK5-60	50	28	32	60	FBH50、CBH53-95、DBH52-70、DYD62-90	1.02
C32-DCK5-120	50	28	32	120		1.89
C32-DCK6-60	64	36	32	60	FBH63、FBH80、CBH68-150、CBH100-203、DBH68-92、	1.42
C32-DCK6-120	64	36	32	120	DBH90-122、DYD82-110、DYD105-140、DYD135-175	2.20

CR/DCK

CR Chamfering Cutter
CR倒角刀

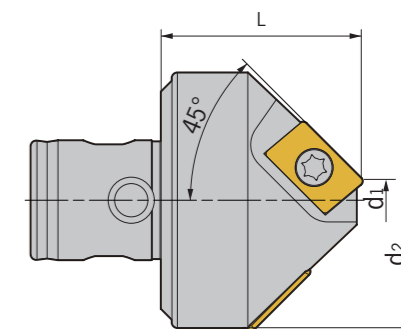


安裝在DCK刀柄上用于鏜孔,倒角復合加工。Assembled with DCK boring tools to chamfer.

型號 Specification	刃數 Teeth	角度 a	d1	d2	H	組合刀柄 Adapter size	L型扳手 Wrench	刀體鎖緊螺釘 Locking screw	刀片型號 Insert	刀片螺釘 Insert screw	旗形扳手 Wrench	重量 Weight
CR 1-34-45	1	45	21	34	22	DCK1	L04	E050U160-D	VCGT110302	M025W060	Q08	0.06
2-39-45	1	45	26	39	25	DCK2	L04	E050U160-D	VCGT110302	M025W060	Q08	0.12
3-54-45	1	45	34	54	35	DCK3	L05	E060U200-D	VCGT160404	M040S100-1	Q15	0.51
4-62-45	1	45	42	62	38	DCK4	L05	E060U200-D	VCGT160404	M040S100-1	Q15	0.69
5-93-45	2	45	53	93	43	DCK5	L05	E060U250-D	VCGT160404	M040S100-1	Q15	1.33
6-107-45	2	45	67	107	46	DCK6	L06	E080U250-D	VCGT160404	M040S100-1	Q15	1.84
6-138-45	2	45	98	138	46	DCK6	L06	E080U250-D	VCGT160404	M040S100-1	Q15	3.86
6-160-45	2	45	120	160	46	DCK6	L06	E080U250-D	VCGT160404	M040S100-1	Q15	5.58
CR 1-41-30	2	30	23	41	30	DCK1	L04	E050U160-D	VCGT110302	M025W060	Q08	0.10
2-46-30	2	30	28	46	35	DCK2	L04	E050U160-D	VCGT110302	M025W060	Q08	0.21
3-53-30	2	30	35	53	35	DCK3	L05	E060U200-D	VCGT110302	M025W060	Q08	0.34
4-61-30	2	30	43	61	35	DCK4	L05	E060U200-D	VCGT110302	M025W060	Q08	0.41
5-84-30	2	30	56	84	48	DCK5	L06	E080U250-D	VCGT160404	M040S100-1	Q15	1.33
6-98-30	2	30	70	98	48	DCK6	L06	E080U250-D	VCGT160404	M040S100-1	Q15	1.21
6-120-30	2	30	92	120	48	DCK6	L06	E080U250-D	VCGT160404	M040S100-1	Q15	3.01
6-142-30	2	30	114	142	48	DCK6	L06	E080U250-D	VCGT160404	M040S100-1	Q15	4.09

適用 Suitable: 德克、京瓷或三菱刀片 DEREK、KYOCERA Or MITSUBISHI Insert

DCK Chamfering Head
DCK倒角刀頭



安裝在DCK刀柄上用于倒角加工。Connected with DCK boring apapter for chamfering.

型號 Specification	刃數 Teeth	d1	d2	L	組合刀柄 Adapter size	刀片型號 Insert	刀片螺釘 Insert screw	旗形扳手 Wrench
DCK 2-0522	1	5	22	25	DCK2	ADNT160308	M040S100-1	Q15
4-1046	2	10	46	36	DCK4	ADNT160308	M040S100-1	Q15
5-3065	2	30	65	50	DCK5	ADNT160308	M040S100-1	Q15
6-63100	2	63	100	60	DCK6	ADNT160308	M040S100-1	Q15

適用 Suitable: 日立刀片 HITACHI Insert