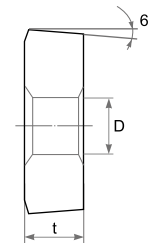
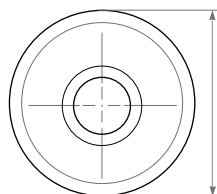
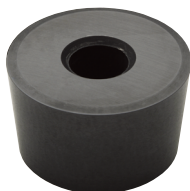


CERAMIC

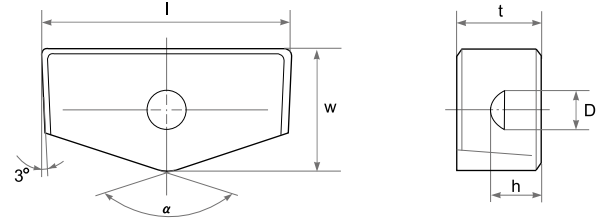
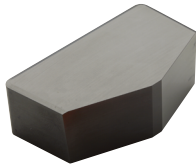
Turning & Milling

CDH



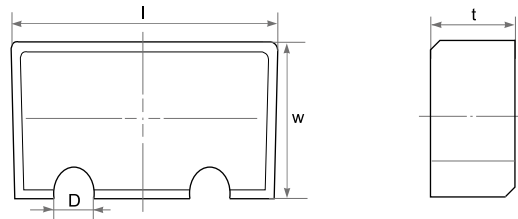
Type		Dimensions (mm)			NEW																		
ISO	ASA	d	t	D	ST100	ST300	ST500	ST900	TC100	TC300	TM300	SD200	SZ200	SZ300	SN26	SN300	SN400	SN500	SN600	SN800	SN900	SW400	SW800
CDH 120600	CDH 22	12.70	6.35	3.18	●	●	●																
CDH 120900	CDH 23	12.70	9.52	3.18	●																		
CDH 190900	CDH 33	19.05	9.52	6.35	●	●	●	●							●								
CDH 191200	CDH 34	19.05	12.70	6.35	●																		
CDH 251200	CDH 42	25.40	12.70	6.75	●	●	●						●		●								
CDH 251900	CDH 43	25.40	19.05	6.75	●								●		●								
CDH 320900	CDH 515	31.75	9.52	10.00	●	●							●		●	●							
CDH 321900	CDH 53	31.75	19.05	10.00	●	●	●	●					●		●	●							
CDH 381100		38.10	11.11	9.93	●																		

F-Series



Type	Dimensions (mm)																									
	l	w	t	D	h	α	ST100	ST300	ST500	ST900	TC100	TC300	TM300	SD200	SZ200	SZ300	SN26	SN300	SN400	SN500	SN600	SN800	SN900	SW400	SW800	
F 13941	32.00	19.05	12.00	6.50	6.00	120°	●	●							●		●	●								
F 10537	44.50	25.40	14.20	6.50	7.00	120°	●	●							●		●	●								

F-Series

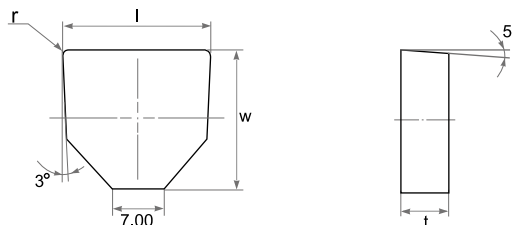
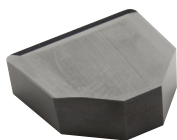


Type	Dimensions (mm)																								
	l	w	t	D	ST100	ST300	ST500	ST900	TC100	TC300	TM300	SD200	SZ200	SZ300	SN26	SN300	SN400	SN500	SN600	SN800	SN900	SW400	SW800		
F 10537 V	44.00	26.00	15.00	5.00	●	●							●												

CERAMIC

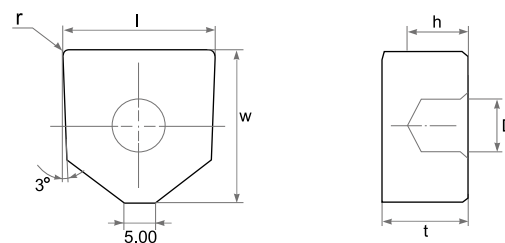
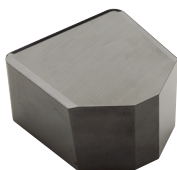
Turning & Milling

F-Series



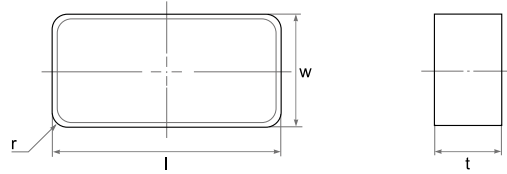
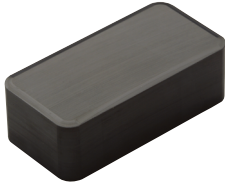
Type	Dimensions (mm)				ST100	ST300	ST500	ST900	TC100	TC300	TM300	SD200	SZ200	SZ300	SN26	SN300	SN400	SN500	SN600	SN800	SN900	SW400	SW800
ISO	l	t	r	w																			
F 250723	25.00	7.94	1.20	23.00		●																	

F-Series



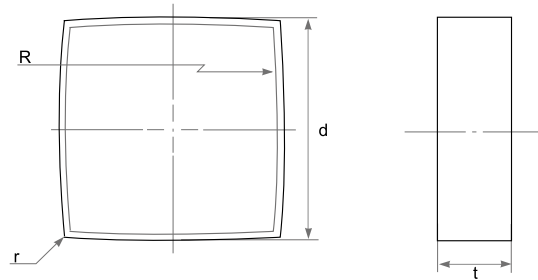
Type	Dimensions (mm)						ST100	ST300	ST500	ST900	TC100	TC300	TM300	SD200	SZ200	SZ300	SN26	SN300	SN400	SN500	SN600	SN800	SN900	SW400	SW800
ISO	l	t	r	w	D	h																			
F 251425	25.00	14.40	2.40	25.40	9.17	10.00											●								
F251425 H65	25.40	14.40	2.40	25.40	6.50	10.00											●								

LNJ



Type	Dimensions (mm)				Material																			
	l	w	t	r	ST100	ST300	ST500	ST900	TC100	TC300	TM300	SD200	SZ200	SZ300	SN26	SN300	SN400	SN500	SN600	SN800	SN900	SW400	SW800	
ISO																								
LNJ 5464	25.40	15.87	9.52	1.6	●	●																		
LNJ 5568	31.75	15.87	9.52	3.2											●									
LNJ 6588	31.75	19.05	12.70	3.2	●	●	●	●					●		●	●								
LNJ 6688	38.10	19.05	12.70	3.2	●	●	●	●					●		●	●				●		●		
LNJ 6898	48.10	21.05	12.70	3.2											●									

SNGN3812R

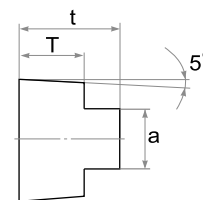
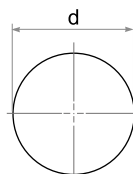


Type	Dimensions (mm)				Material																			
	d	t	r	R	ST100	ST300	ST500	ST900	TC100	TC300	TM300	SD200	SZ200	SZ300	SN26	SN300	SN400	SN500	SN600	SN800	SN900	SW400	SW800	
ISO																								
SNGN 3812R	38.10	12.70	0.4	114	●	●	●																	

CERAMIC

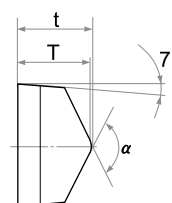
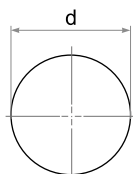
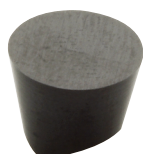
Turning & Milling

RBGX



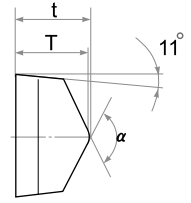
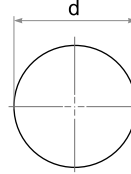
Type	Dimensions (mm)				Material																			
	d	t	T	a	ST100	ST300	ST500	ST900	TC100	TC300	TM300	SD200	SZ200	SZ300	SN26	SN300	SN400	SN500	SN600	SN800	SN900	SW400	SW800	
ISO																								
RBGX 06T	6.00	5.00	3.00	3.00	●	●																		
RBGX 08T	8.00	6.50	4.00	4.00	●	●																		
RBGX 10T	10.00	9.00	6.00	6.00		●																		
RBGX 12T	12.00	9.00	6.00	6.00	●	●																		
RBGX 16T	16.00	13.00	8.00	8.00	●	●																		
RBGX 20T	20.00	15.00	10.00	10.00	●	●	●	●																
RBGX 26T	26.00	15.00	10.00	14.00	●	●																		

RCGX



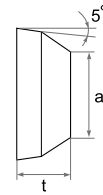
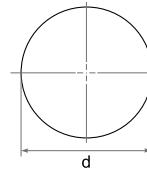
Type		Dimensions (mm)				Material																		
ISO	ASA	d	t	T	α	ST100	ST300	ST500	ST900	TC100	TC300	TM300	SD200	SZ200	SZ300	SN26	SN300	SN400	SN500	SN600	SN800	SN900	SW400	SW800
RCGX 060400	RCGX 102	6.35	4.76	4.57	120°	●	●														●		●	●
RCGX 060600	RCGX 102	6.35	6.35	6.20	120°	●	●	●	●															
RCGX 060700	RCGX 102	6.35	7.94	7.70	120°	●	●	●	●							●					●			
RCGX 090700	RCGX 103	9.52	7.94	7.70	120°	●	●	●	●	●		●				●					●	●	●	●
RCGX 120700	RCGX 104	12.70	7.94	7.70	120°	●	●	●	●	●		●				●					●	●	●	●
RCGX 151000	RCGX 105	15.87	10.00	9.77	120°	●	●	●	●							●					●	●		
RCGX 191000	RCGX 106	19.05	10.00	9.77	120°	●	●	●	●							●					●	●		
RCGX 251200	RCGX 108	25.40	12.00	11.85	140°	●	●	●	●							●					●			

RPGX



Type		Dimensions (mm)				NEW																			
ISO	ASA	d	t	T	α	ST100	ST300	ST500	ST900	TC100	TC300	TM300	SD200	SZ200	SZ300	SN26	SN300	SN400	SN500	SN600	SN800	SN900	SW400	SW800	
RPGX 060400	RPGX 102	6.35	4.76	4.57	120°																			●	●
RPGX 090700	RPGX 103	9.52	7.94	7.70	120°																	●	●	●	●
RPGX 120700	RPGX 104	12.70	7.94	7.70	120°																	●	●	●	●

RXGX



Type		Dimensions (mm)			NEW																			
ISO		d	t	a	ST100	ST300	ST500	ST900	TC100	TC300	TM300	SD200	SZ200	SZ300	SN26	SN300	SN400	SN500	SN600	SN800	SN900	SW400	SW800	
RXGX 1207MO		12.00	7.94	6.90		●																		
RXGX 1608MO		16.00	8.00	9.50		●							●											
RXGX 2508MO		25.00	8.00	18.20	●								●											