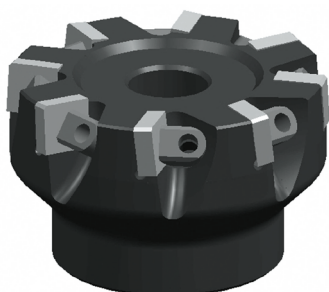


FACE MILLING CUTTER

Turning & Milling

SFKN .. 88

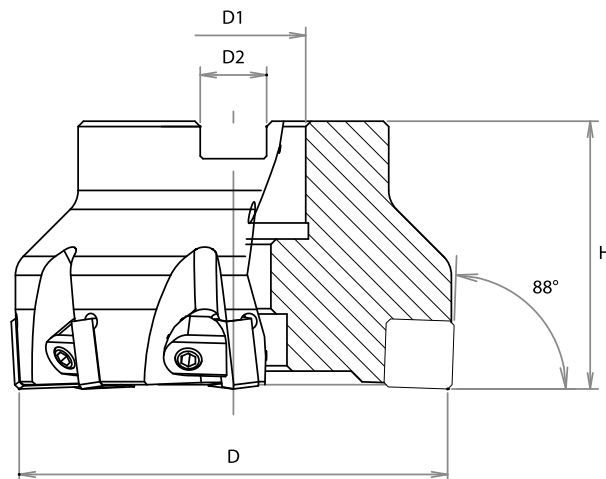


Axial rake angle : -7°

Radial rake angle

D40 : -12°

D50~125 : -10°



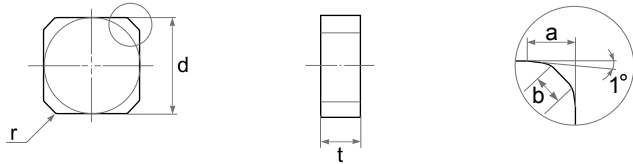
Type	Dimensions (mm)				Gear Icon	Insert
	D	D1	D2	H		
SFKN 040-04-88 N4	40	16	8.4	40	4	SNCN 0904 ZZT
SFKN 050-05-88 N4	50	22	10.4	40	5	
SFKN 063-06-88 N4	63	22	10.4	40	6	SNCN 1204 ZZT SNCN 1204 ZN
SFKN 080-08-88 N4A	80	25.4	9.5	50	8	
SFKN 080-08-88 N4	80	27	12.4	50	8	
SFKN 100-10-88 N4A	100	31.75	12.7	50	10	
SFKN 100-10-88 N4	100	32	14.4	50	10	
SFKN 125-12-88 N4A	125	38.1	15.9	63	12	
SFKN 125-12-88 N4	125	40	16.4	63	12	

Dimensions (mm)	Spare parts		
	Wedge	Wedge Screw	Wrench
D			
40 - 50	SSW9	WS6 (M6)	LW3
63 - 125	SSW10	WS6 (M6)	LW3

Recommended Cutting Condition for Gray Cast Iron

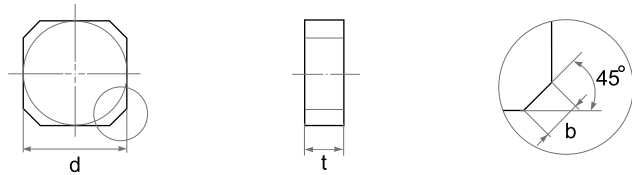
Process	Hardness (HB)	Cutting Speed Vc(m/min)	Feed fz(mm/z)	Depth ap(mm)	Surface Quality Ra(μm)
Roughing	190~210	800~2,000	0.08~0.15	2.0~5.0	6.3~12.5
Roughing	220~240	500~1,500	0.08~0.15	2.0~5.0	6.3~12.5
Roughing	250~280	300~1,200	0.08~0.15	2.0~5.0	6.3~12.5

SNCN .. ZZT



Type		Dimensions (mm)																							
ISO	ASA	d	t	a	b	ST100	ST300	ST500	ST900	TC100	TC300	TM300	SD200	SZ200	SZ300	SN26	SN300	SN400	SN500	SN600	SN800	SN900	SW400	SW800	
SNCN 0904 ZZT	SNCN 33 ZZT	9.52	4.76	1.30	1.10													●	●		●				
SNCN 1204 ZZT	SNCN 43 ZZT	12.70	4.76	3.25	1.10													●	●		●				

SNCN .. ZN



Type		Dimensions (mm)																						
ISO	ASA	d	t	b	ST100	ST300	ST500	ST900	TC100	TC300	TM300	SD200	SZ200	SZ300	SN26	SN300	SN400	SN500	SN600	SN800	SN900	SW400	SW800	
SNCN 1204 ZN	SNCN 43 ZN	12.70	4.76	1.10													●							

FACE MILLING CUTTER

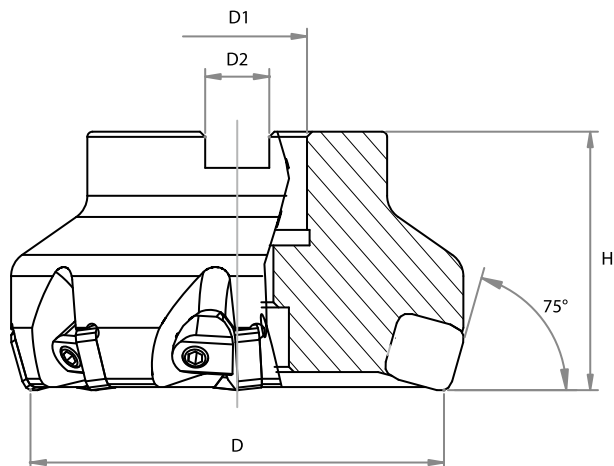
Turning & Milling

SFKN .. 75



Axial rake angle : -6°

Radial rake angle : -10°



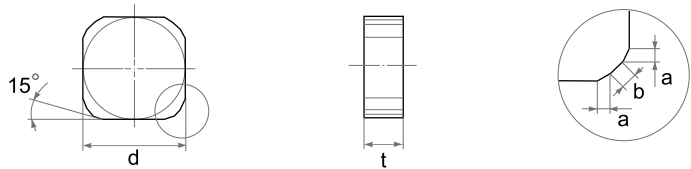
Type	Dimensions (mm)				⚙️	Insert
	D	D ₁	D ₂	H		
SFKN 050-05-75 N4	50	22	10.4	40	5	SNCN 1204 ENTN SNGN 1204 □ □
SFKN 063-06-75 N4	63	22	10.4	40	6	
SFKN 080-08-75 N4A	80	25.4	9.5	50	8	
SFKN 080-08-75 N4	80	27	12.4	50	8	
SFKN 100-10-75 N4A	100	31.75	12.7	50	10	
SFKN 100-10-75 N4	100	32	14.4	50	10	
SFKN 125-12-75 N4A	125	38.1	15.9	63	12	
SFKN 125-12-75 N4	125	40	16.4	63	12	

Dimensions (mm)	Spare parts		
D	Wedge	Wedge Screw	Wrench
50	SSW10	WS6 (M6)	LW3
63 - 125	SSW10	WS6 (M6)	LW3

Recommended Cutting Condition for Gray Cast Iron

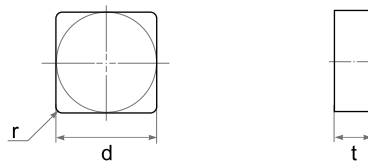
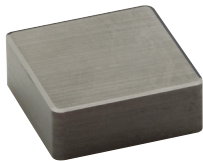
Process	Hardness (HB)	Cutting Speed V _c (m/min)	Feed f _z (mm/z)	Depth a _p (mm)	Surface Quality Ra(μm)
Roughing	190~210	800~2,000	0.10~0.20	2.0~5.0	6.3~12.5
Roughing	220~240	500~1,500	0.10~0.20	2.0~5.0	6.3~12.5
Roughing	250~280	300~1,200	0.10~0.20	2.0~5.0	6.3~12.5

SNCN .. ENTN



Type		Dimensions (mm)																							
ISO	ASA	d	t	a	b	ST100	ST300	ST500	ST900	TC100	TC300	TM300	SD200	SZ200	SZ300	SN26	SN300	SN400	SN500	SN600	SN800	SN900	SW400	SW800	
SNCN 1204 ENTN	SNCN 43 ENTN	12.70	4.76	1.40	1.00											●	●	●							

SNGN

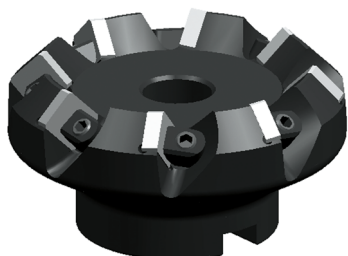


Type		Dimensions (mm)																						
ISO	ASA	d	t	r	ST100	ST300	ST500	ST900	TC100	TC300	TM300	SD200	SZ200	SZ300	SN26	SN300	SN400	SN500	SN600	SN800	SN900	SW400	SW800	
SNGN 120412	SNGN 433	12.70	4.76	1.2																				
SNGN 120416	SNGN 434	12.70	4.76	1.6													●							

FACE MILLING CUTTER

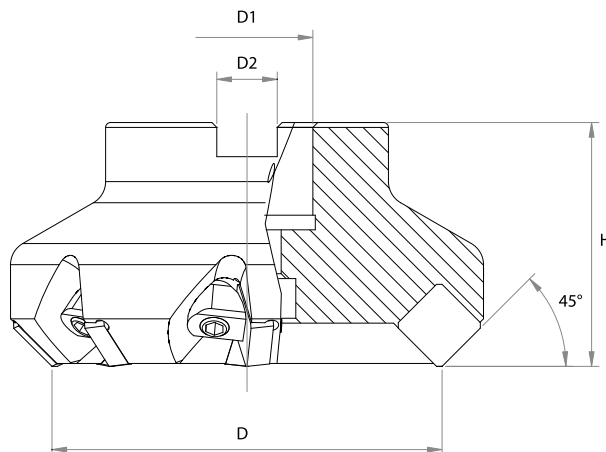
Turning & Milling

SFKN .. 45



Axial rake angle : -6°

Radial rake angle : -12°



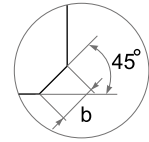
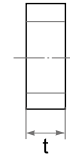
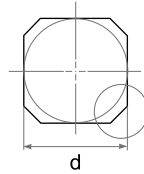
Type	Dimensions (mm)				⚙️	Insert
	D	D ₁	D ₂	H		
SFKN 050-05-45 N4	50	22	10.4	40	5	SNCN 1204 AN SNCN 1204 ZN SNGN 1204 □ □
SFKN 063-06-45 N4	63	22	10.4	40	6	
SFKN 080-08-45 N4A	80	25.4	9.5	50	8	
SFKN 080-08-45 N4	80	27	12.4	50	8	
SFKN 100-10-45 N4A	100	31.75	12.7	50	10	
SFKN 100-10-45 N4	100	32	14.4	50	10	
SFKN 125-12-45 N4A	125	38.1	15.9	63	12	
SFKN 125-12-45 N4	125	40	16.4	63	12	

Dimensions (mm)	Spare parts		
D	Wedge	Wedge Screw	Wrench
50	SSW9	WS6 (M6)	LW3
63 - 125	SSW10	WS6 (M6)	LW3

Recommended Cutting Condition for Gray Cast Iron

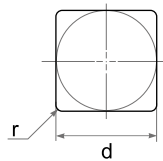
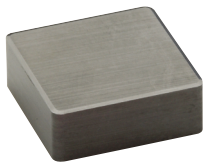
Process	Hardness (HB)	Cutting Speed V _c (m/min)	Feed f _z (mm/z)	Depth a _p (mm)	Surface Quality Ra(μm)
Roughing	190~210	800~2,000	0.15~0.30	2.0~5.0	3.2~12.5
Roughing	220~240	500~1,500	0.15~0.30	2.0~5.0	3.2~12.5
Roughing	250~280	300~1,200	0.15~0.30	2.0~5.0	3.2~12.5

SNCN



Type		Dimensions (mm)																						
ISO	ASA	d	t	b	ST100	ST300	ST500	ST900	TC100	TC300	TM300	SD200	SZ200	SZ300	SN26	SN300	SN400	SN500	SN600	SN800	SN900	SW400	SW800	
SNCN 1204 AN	SNCN 43 AN	12.70	4.76	2.50													●							
SNCN 1204 ZN	SNCN 43 ZN	12.70	4.76	1.10													●							

SNGN

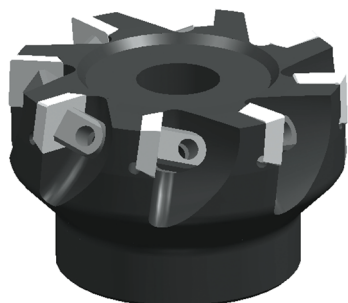


Type		Dimensions (mm)																						
ISO	ASA	d	t	r	ST100	ST300	ST500	ST900	TC100	TC300	TM300	SD200	SZ200	SZ300	SN26	SN300	SN400	SN500	SN600	SN800	SN900	SW400	SW800	
SNGN 120412	SNGN 433	12.70	4.76	1.2													●							
SNGN 120416	SNGN 434	12.70	4.76	1.6													●							

FACE MILLING CUTTER

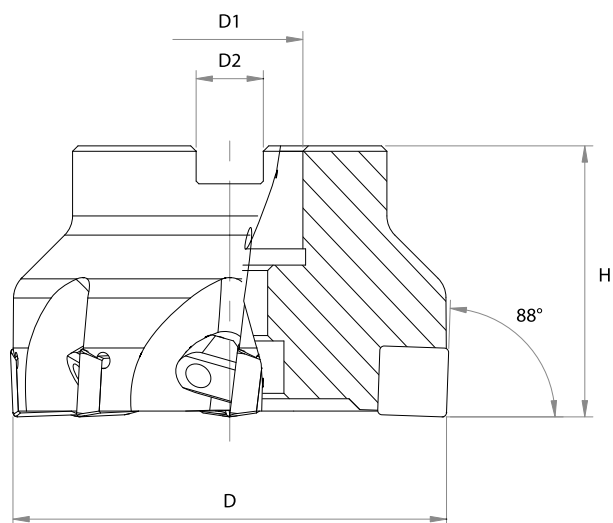
Turning & Milling

SFKP .. 88



Axial rake angle : +7°

Radial rake angle : +3°



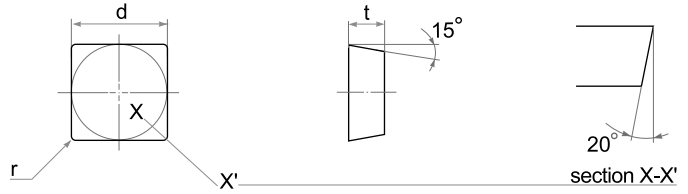
Type	Dimensions (mm)				⚙️	Insert
	D	D1	D2	H		
SFKP 050-05-88 N4	50	22	10.4	40	5	SDCN 1204 □ □ T20
SFKP 063-06-88 N4	63	22	10.4	40	6	
SFKP 080-08-88 N4A	80	25.4	9.5	50	8	
SFKP 080-08-88 N4	80	27	12.4	50	8	
SFKP 100-10-88 N4A	100	31.75	12.7	50	10	
SFKP 100-10-88 N4	100	32	14.4	50	10	
SFKP 125-12-88 N4A	125	38.1	15.9	63	12	
SFKP 125-12-88 N4	125	40	16.4	63	12	

Dimensions (mm)	Spare parts		
D	Wedge	Wedge Screw	Wrench
50	SSW9	WS6 (M6)	LW3
63 - 125	SSW10	WS6 (M6)	LW3

Recommended Cutting Condition for Gray Cast Iron

Process	Hardness (HB)	Cutting Speed Vc(m/min)	Feed fz(mm/z)	Depth ap(mm)	Surface Quality Ra(μm)
Roughing	190~210	800~2,000	0.08~0.15	2.0~5.0	6.3~12.5
Roughing	220~240	500~1,500	0.08~0.15	2.0~5.0	6.3~12.5
Roughing	250~280	300~1,200	0.08~0.15	2.0~5.0	6.3~12.5

SDCN .. T

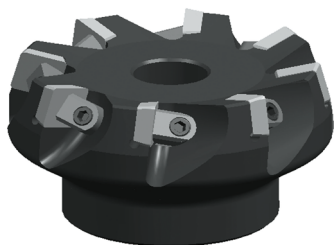


Type		Dimensions (mm)																						
ISO	ASA	d	t	r	ST100	ST300	ST500	ST900	TC100	TC300	TM300	SD200	SZ200	SZ300	SN26	SN300	SN400	SN500	SN600	SN800	SN900	SW400	SW800	
SDCN 120408 T20	SDCN 432 T20	12.70	4.76	0.8													●							
SDCN 120412 T20	SDCN 433 T20	12.70	4.76	1.2													●							

FACE MILLING CUTTER

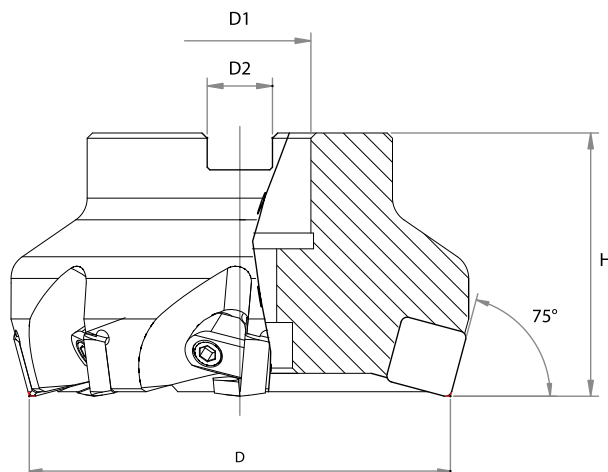
Turning & Milling

SFKP .. 75



Axial rake angle : +5°

Radial rake angle : 0°



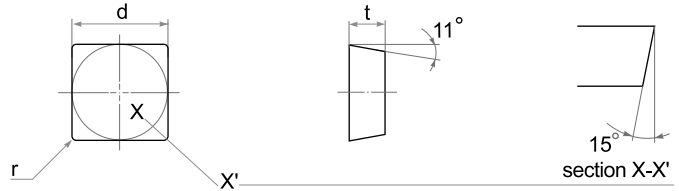
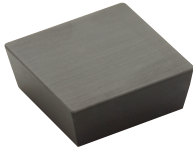
Type	Dimensions (mm)				⚙️	Insert
	D	D1	D2	H		
SFKP 050-05-75 N4	50	22	10.4	40	5	SPCN 1204 □ □ T15 SPKN 1204SP EDTR
SFKP 063-06-75 N4	63	22	10.4	40	6	
SFKP 080-08-75 N4A	80	25.4	9.5	50	8	
SFKP 080-08-75 N4	80	27	12.4	50	8	
SFKP 100-10-75 N4A	100	31.75	12.7	50	10	
SFKP 100-10-75 N4	100	32	14.4	50	10	
SFKP 125-12-75 N4A	125	38.1	15.9	63	12	
SFKP 125-12-75 N4	125	40	16.4	63	12	

Dimensions (mm)	Spare parts		
D	Wedge	Wedge Screw	Wrench
50	SSW9	WS6 (M6)	LW3
63 - 125	SSW10	WS6 (M6)	LW3

Recommended Cutting Condition for Gray Cast Iron

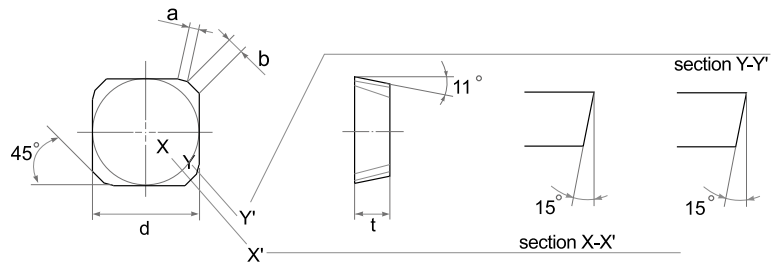
Process	Hardness (HB)	Cutting Speed Vc(m/min)	Feed fz(mm/z)	Depth ap(mm)	Surface Quality Ra(μm)
Roughing	190~210	800~2,000	0.10~0.20	2.0~5.0	3.2~12.5
Roughing	220~240	500~1,500	0.10~0.20	2.0~5.0	3.2~12.5
Roughing	250~280	300~1,200	0.10~0.20	2.0~5.0	3.2~12.5

SPCN .. T



Type		Dimensions (mm)																						
ISO	ASA	d	t	r	ST100	ST300	ST500	ST900	TC100	TC300	TM300	SD200	SZ200	SZ300	SN26	SN300	SN400	SN500	SN600	SN800	SN900	SW400	SW800	
SPCN 120412 T15	SPCN 433 T15	12.70	4.76	1.2													●							
SPCN 120416 T15	SPCN 434 T15	12.70	4.76	1.6													●							

SPKN .. SP



Type		Dimensions (mm)																						
ISO	ASA	d	t	a	b	ST100	ST300	ST500	ST900	TC100	TC300	TM300	SD200	SZ200	SZ300	SN26	SN300	SN400	SN500	SN600	SN800	SN900	SW400	SW800
SPKN 1204SP EDTR	SPKN 43SP EDTR	12.70	4.76	1.10	1.30													●						

FACE MILLING CUTTER

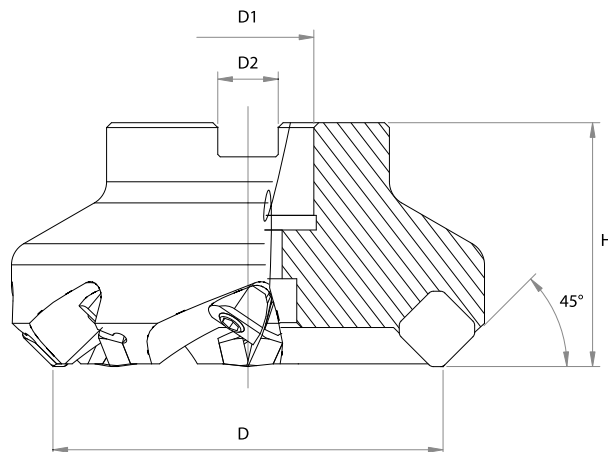
Turning & Milling

SFKP .. 45



Axial rake angle : +19°

Radial rake angle : -6°



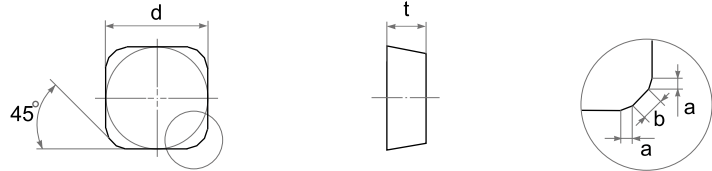
Type	Dimensions (mm)				⚙️	Insert
	D	D ₁	D ₂	H		
SFKP 050-05-45 N4	50	22	10.4	40	5	SEAN 1204 AFTN W25 SEAN 1204 □ □ T25
SFKP 063-06-45 N4	63	22	10.4	40	6	
SFKP 080-08-45 N4A	80	25.4	9.5	50	8	
SFKP 080-08-45 N4	80	27	12.4	50	8	
SFKP 100-10-45 N4A	100	31.75	12.7	50	10	
SFKP 100-10-45 N4	100	32	14.4	50	10	
SFKP 050-05-45 N3	50	22	10.4	40	5	SEAN 1203 NWAFTN SEAN 1203 AFTN
SFKP 063-06-45 N3	63	22	10.4	40	6	
SFKP 080-08-45 N3A	80	25.4	9.5	50	8	
SFKP 080-08-45 N3	80	27	12.4	50	8	
SFKP 100-10-45 N3A	100	31.75	12.7	50	10	
SFKP 100-10-45 N3	100	32	14.4	50	10	

Dimensions (mm)	Spare parts		
D	Wedge	Wedge Screw	Wrench
50	SSW9	WS6 (M6)	LW3
63 - 100	SSW10	WS6 (M6)	LW3

Recommended Cutting Condition for Gray Cast Iron

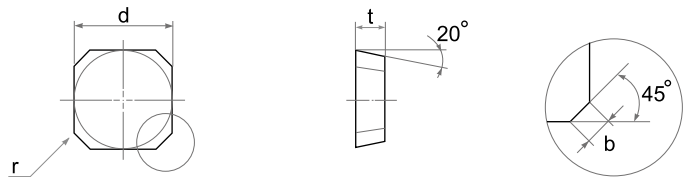
Process	Hardness (HB)	Cutting Speed Vc(m/min)	Feed fz(mm/z)	Depth ap(mm)	Surface Quality Ra(μm)
Roughing	190~210	800~2,000	0.15~0.30	2.0~5.0	6.3~12.5
Roughing	220~240	500~1,500	0.15~0.30	2.0~5.0	6.3~12.5
Roughing	250~280	300~1,200	0.15~0.30	2.0~5.0	6.3~12.5

SEAN



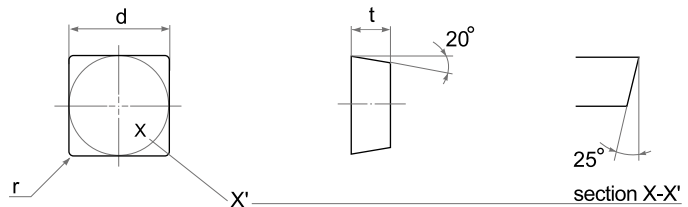
Type		Dimensions (mm)																							
ISO	ASA	d	t	a	b	ST100	ST300	ST500	ST900	TC100	TC300	TM300	SD200	SZ200	SZ300	SN26	SN300	SN400	SN500	SN600	SN800	SN900	SW400	SW800	
SEAN 1203 AFTN	SEAN 42 AFTN	12.70	3.18	0.50	1.80											●	●	●							

SEAN .. NW



Type		Dimensions (mm)																							
ISO	ASA	d	t	b	r	ST100	ST300	ST500	ST900	TC100	TC300	TM300	SD200	SZ200	SZ300	SN26	SN300	SN400	SN500	SN600	SN800	SN900	SW400	SW800	
SEAN 1203 NWAFTN	SEAN 42 NWAFTN	12.70	3.18	2.40	0.4											●									
SEAN 1204 AFTNW25	SEAN 43 AFTNW25	12.70	4.76	2.50	1.2													●							

SEAN .. T



Type		Dimensions (mm)																							
ISO	ASA	d	t	r	ST100	ST300	ST500	ST900	TC100	TC300	TM300	SD200	SZ200	SZ300	SN26	SN300	SN400	SN500	SN600	SN800	SN900	SW400	SW800		
SEAN 120412 T25	SEAN 433 T25	12.70	4.76	1.2														●							
SEAN 120416 T25	SEAN 434 T25	12.70	4.76	1.6														●							

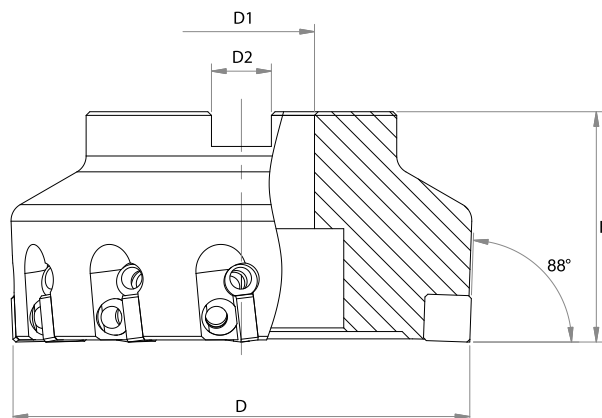
FACE MILLING CUTTER

SFAN .. 88



Axial rake angle : -7°

Radial rake angle : -10°



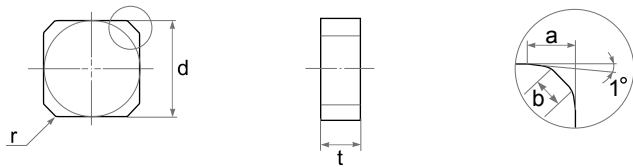
Type	Dimensions (mm)				⚙️	Insert
	D	D ₁	D ₂	H		
SFAN 063-06-88 N4	63	22	10.4	40	6	SNCN 1204 ZZT SNCN 1204 ZN
SFAN 080-08-88 N4A	80	25.4	9.5	50	8	
SFAN 080-08-88 N4	80	27	12.4	50	8	
SFAN 100-10-88 N4A	100	31.75	12.7	50	10	
SFAN 100-10-88 N4	100	32	14.4	50	10	
SFAN 125-12-88 N4A	125	38.1	15.9	63	12	
SFAN 125-12-88 N4	125	40	16.4	63	12	

Dimensions (mm)	Spare parts				
	Wedge	Wedge Screw	Adjust Wedge	Adjust Wedge Screw	Wrench
D					
63 - 125	SW16	WS6 (M6)	SAW 20	WS6 (M6)	LW3

Recommended Cutting Condition for Gray Cast Iron

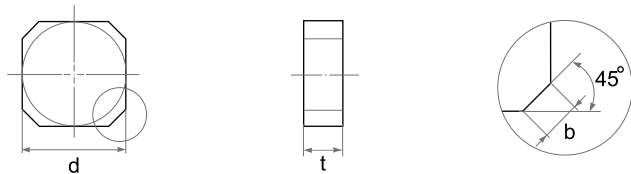
Process	Hardness (HB)	Cutting Speed V _c (m/min)	Feed f _z (mm/z)	Depth a _p (mm)	Surface Quality Ra(μm)
Roughing	190~210	800~2,000	0.08~0.15	2.0~5.0	6.3~12.5
Roughing	220~240	500~1,500	0.08~0.15	2.0~5.0	6.3~12.5
Roughing	250~280	300~1,200	0.08~0.15	2.0~5.0	6.3~12.5
Finishing	190~210	200~900	0.05~0.10	0.1~0.5	0.8
Finishing	220~240	200~700	0.05~0.10	0.1~0.5	0.8
Finishing	250~280	200~500	0.05~0.10	0.1~0.5	0.8

SNCN .. ZZT



Type		Dimensions (mm)																							
ISO	ASA	d	t	a	b	ST100	ST300	ST500	ST900	TC100	TC300	TM300	SD200	SZ200	SZ300	SN26	SN300	SN400	SN500	SN600	SN800	SN900	SW400	SW800	
SNCN 1204 ZZT	SNCN 43 ZZT	12.70	4.76	3.25	1.10		●											●	●		●				

SNCN .. ZN

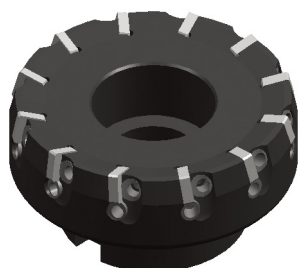


Type		Dimensions (mm)																						
ISO	ASA	d	t	b	ST100	ST300	ST500	ST900	TC100	TC300	TM300	SD200	SZ200	SZ300	SN26	SN300	SN400	SN500	SN600	SN800	SN900	SW400	SW800	
SNCN 1204 ZN	SNCN 43 ZN	12.70	4.76	1.10													●							

FACE MILLING CUTTER

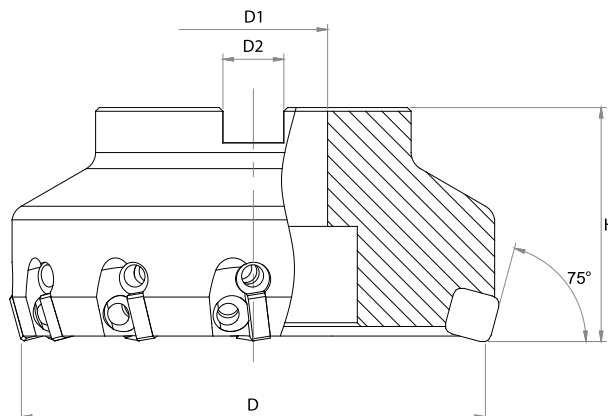
Turning & Milling

SFAN .. 75



Axial rake angle : -6°

Radial rake angle : -10°



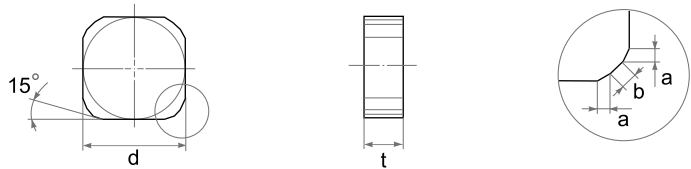
Type	Dimensions (mm)				⚙️	Insert
	D	D ₁	D ₂	H		
SFAN 063-06-75 N4	63	22	10.4	40	6	SNCN 1204 ENTN SNGN 1204 □ □
SFAN 080-08-75 N4A	80	25.4	9.5	50	8	
SFAN 080-08-75 N4	80	27	12.4	50	8	
SFAN 100-10-75 N4A	100	31.75	12.7	50	10	
SFAN 100-10-75 N4	100	32	14.4	50	10	
SFAN 125-12-75 N4A	125	38.1	15.9	63	12	
SFAN 125-12-75 N4	125	40	16.4	63	12	

Dimensions (mm)	Spare parts				
	Wedge	Wedge Screw	Adjust Wedge	Adjust Wedge Screw	Wrench
D					
63 - 125	SW16	WS6 (M6)	SAW 20	WS6 (M6)	LW3

Recommended Cutting Condition for Gray Cast Iron

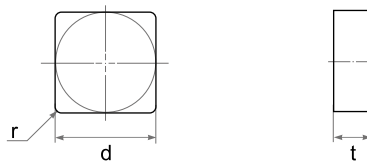
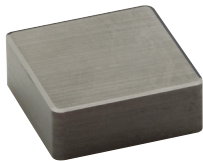
Process	Hardness (HB)	Cutting Speed V _c (m/min)	Feed f _z (mm/z)	Depth a _p (mm)	Surface Quality Ra(μm)
Roughing	190~210	800~2,000	0.08~0.15	2.0~5.0	6.3~12.5
Roughing	220~240	500~1,500	0.08~0.15	2.0~5.0	6.3~12.5
Roughing	250~280	300~1,200	0.08~0.15	2.0~5.0	6.3~12.5
Finishing	190~210	200~900	0.08~0.15	0.1~0.5	0.8
Finishing	220~240	200~700	0.08~0.15	0.1~0.5	0.8
Finishing	250~280	200~500	0.08~0.15	0.1~0.5	0.8

SNCN .. ENTN



Type		Dimensions (mm)																							
ISO	ASA	d	t	a	b	ST100	ST300	ST500	ST900	TC100	TC300	TM300	SD200	SZ200	SZ300	SN26	SN300	SN400	SN500	SN600	SN800	SN900	SW400	SW800	
SNCN 1204 ENTN	SNCN 43 ENTN	12.70	4.76	1.40	1.00											●	●	●							

SNGN

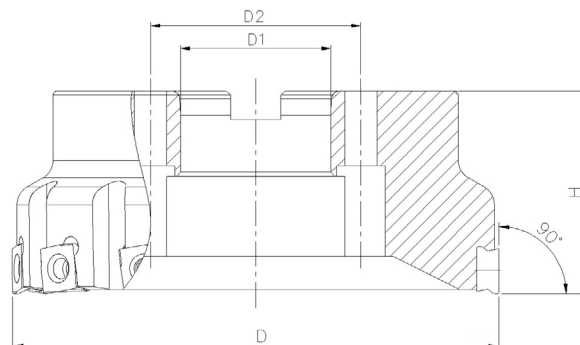
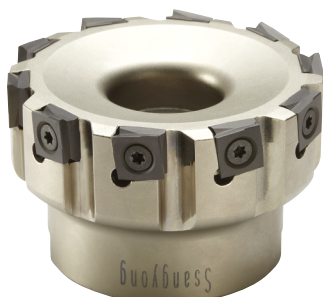


Type		Dimensions (mm)																						
ISO	ASA	d	t	r	ST100	ST300	ST500	ST900	TC100	TC300	TM300	SD200	SZ200	SZ300	SN26	SN300	SN400	SN500	SN600	SN800	SN900	SW400	SW800	
SNGN 120412	SNGN 433	12.70	4.76	1.2		●											●							
SNGN 120416	SNGN 434	12.70	4.76	1.6		●											●							

FACE MILLING CUTTER

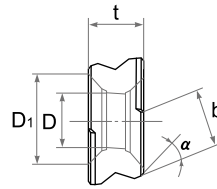
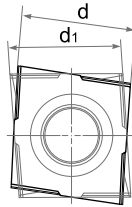
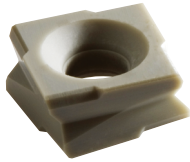
Turning & Milling

SFSX .. 00 .. EC


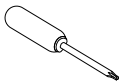


Type	Dimensions (mm)				Number of Inserts	Insert	
	D	D1	D2	H			
SFSX 050-05-00-A5EC	50	22		40	5	SPHX1205 NR	
SFSX 050-05-00-A5ECA	50.8	19.05		44.5	5		
SFSX 063-07-00-A5EC	63	22	-	40	7		
SFSX 063-07-00-A5ECA	63.5	19.05		44.5	7		
SFSX 080-08-00-A5EC	80	27	-	50	8		
SFSX 080-08-00-A5ECA	76.2	25.4		44.5	8		
SFSX 100-12-00-A5EC	100	32	-	50	12		
SFSX 100-12-00-A5ECA	101.6	38.1		44.5	12		
SFSX 125-15-00-A5EC	125	40	-	63	15		
SFSX 125-15-00-A5ECA	127.0	38.1		60.5	15		
SFSX 160-18-00-A5EC	160	40	66.7	63	18		
SFSX 160-18-00-A5ECA	152.4	50.8	101.6	60.5	18		
SFSX 200-24-00-A5EC	200	60	101.6	63	24		
SFSX 200-24-00-A5ECA	203.2	63.5	101.6	60.5	24		
SFSX 250-30-00-A5EC	250	60	101.6	63	30		
SFSX 250-30-00-A5ECA	254.0	63.5	101.6	60.5	30		
SFSX 080-06-00-AT6EC	80	27	-	50	6		SPHX15T6 NR
SFSX 080-06-00-AT6ECA	76.2	25.4		44.5	6		
SFSX 100-08-00-AT6EC	100	32	-	50	8		
SFSX 100-08-00-AT6ECA	101.6	31.75		44.5	8		
SFSX 125-10-00-AT6EC	125	40	-	63	10		
SFSX 125-10-00-AT6ECA	127	38.1		60.5	10		
SFSX 160-14-00-AT6EC	160	40	66.7	63	14		
SFSX 160-14-00-AT6ECA	152.4	50.8		60.5	14		

SPHX



Type	Dimensions (mm)																										
	d	d ₁	t	D	D ₁	α	b	ST100	ST300	ST500	ST900	TC100	TC300	TM300	SD200	SZ200	SZ300	SN26	SN300	SN400	SN500	SN600	SN800	SN900	SW400	SW800	
SPHX 1205NR 480T	11.67	11.33	5.50	5.10	8.41	45	8.0													●		●					
SPHX 1205NL 480T	11.67	11.33	5.50	5.10	8.41	45	8.0																				
SPHX 15T6NR 880T	14.58	14.33	6.60	6.10	10.18	45	8.80													●		●					

Dimensions (mm)	Spare parts	
	Screw	Wrench
D		
50 - 250 (SPHX1205 NR)	C94010	T15
80 - 160 (SPHX15T6 NR)	C95012	T20

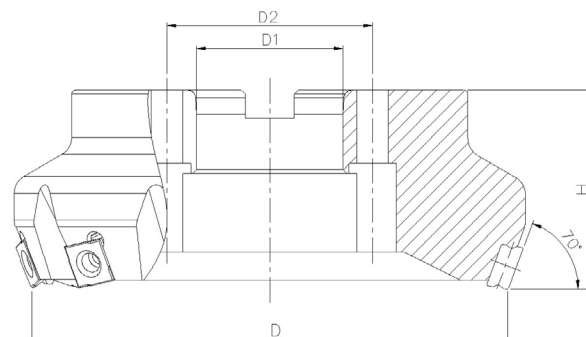
Recommended Cutting Conditions

Work - Piece	Cutting Speed Vc(m/min)	Feed fz(mm/z)	Depth ap(mm) max
Gray Cast Irons	500~1,400	0.15~0.25	~5.0
Ductile Cast Irons	450~900	0.10~0.20	~3.0

FACE MILLING CUTTER

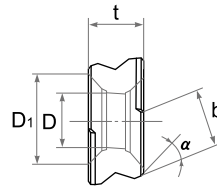
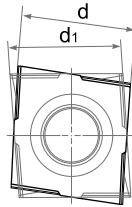
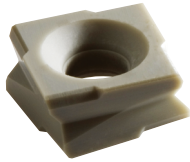
Turning & Milling

SFSX .. 70 .. EC


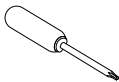


Type	Dimensions (mm)				Z	Insert	
	D	D1	D2	H			
SFSX 050-05-70-A5EC	50	22		40	5	SPHX1205 ER	
SFSX 050-05-70-A5ECA	50.8	19.05		44.5	5		
SFSX 063-07-70-A5EC	63	22	-	40	7		
SFSX 063-07-70-A5ECA	63.5	19.05		44.5	7		
SFSX 080-08-70-A5EC	80	27	-	50	8		
SFSX 080-08-70-A5ECA	76.2	25.4		44.5	8		
SFSX 100-12-70-A5EC	100	32	-	50	12		
SFSX 100-12-70-A5ECA	101.6	38.1		44.5	12		
SFSX 125-15-70-A5EC	125	40	-	63	15		
SFSX 125-15-70-A5ECA	127.0	38.1		60.5	15		
SFSX 160-18-70-A5EC	160	40	66.7	63	18		
SFSX 160-18-70-A5ECA	152.4	50.8	101.6	60.5	18		
SFSX 200-24-70-A5EC	200	60	101.6	63	24		
SFSX 200-24-70-A5ECA	203.2	63.5	101.6	60.5	24		
SFSX 250-30-70-A5EC	250	60	101.6	63	30		
SFSX 250-30-70-A5ECA	254.0	63.5	101.6	60.5	30		
SFSX 080-07-70-AT6EC	80	27	-	50	7		SPHX15T6 ER
SFSX 080-07-70-AT6ECA	76.2	25.4		44.5	7		
SFSX 100-09-70-AT6EC	100	32	-	50	9		
SFSX 100-09-70-AT6ECA	101.6	31.75		44.5	9		
SFSX 125-12-70-AT6EC	125	40	-	63	12		
SFSX 125-12-70-AT6ECA	127	38.1		60.5	12		
SFSX 160-16-70-AT6EC	160	40	66.7	63	16		
SFSX 160-16-70-AT6ECA	152.4	50.8	-	60.5	16		

SPHX



Type	Dimensions (mm)																										
	d	d ₁	t	D	D ₁	α	b	ST100	ST300	ST500	ST900	TC100	TC300	TM300	SD200	SZ200	SZ300	SN26	SN300	SN400	SN500	SN600	SN800	SN900	SW400	SW800	
SPHX 1205ER 855T	12.09	11.33	5.50	5.10	8.41	35	5.50													●		●					
SPHX 1205EL 855T	12.09	11.33	5.50	5.10	8.41	35	5.50													●							
SPHX 15T6ER 865T	15.50	14.33	6.60	6.10	10.18	35	6.50													●		●					

Dimensions (mm)	Spare parts	
	Screw	Wrench
D		
50 - 250 (SPHX1205 ER)	C94010	T15
80 - 160 (SPHX15T6 ER)	C95012	T20

Recommended Cutting Conditions

Work - Piece	Cutting Speed V _c (m/min)	Feed f _z (mm/z)	Depth a _p (mm) max
Gray Cast Irons	500~1,400	0.15~0.30	~4.0
Ductile Cast Irons	450~900	0.10~0.25	~2.5

FACE MILLING CUTTER

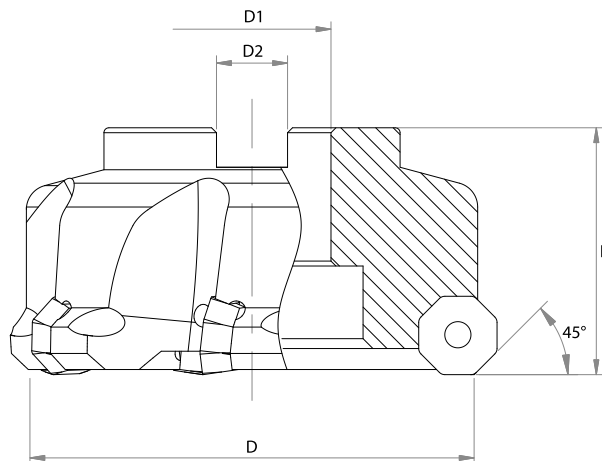
Turning & Milling

SFSP .. OT



Axial rake angle : +3°

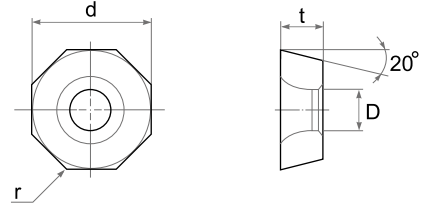
Radial rake angle : +7°



Type	Dimensions (mm)					Insert
	D	D ₁	D ₂	H		
SFSP 063-05-45-A4 OT	63	22	10.40	40	5	OEGB 0704 □ □
SFSP 080-06-45-A4 OT	80	27	12.40	50	6	
SFSP 100-07-45-A4 OT	100	32	14.40	50	7	

Dimensions (mm)	Spare parts	
	Screw	Wrench
D		
63 - 100	SWS 21480072	T20

OEGB



Type	Dimensions (mm)																							
	d	t	D	r	ST100	ST300	ST500	ST900	TC100	TC300	TM300	SD200	SZ200	SZ300	SN26	SN300	SN400	SN500	SN600	SN800	SN900	SW400	SW800	
ISO																								
OEGB 070408	15.87	4.76	5.18	0.8													●							
OEGB 070416	15.87	4.76	5.18	1.6												●	●							

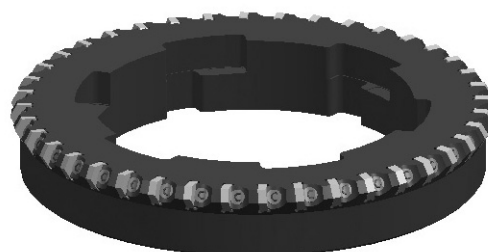
FACE MILLING CUTTER

Turning & Milling

SFKN .. HX



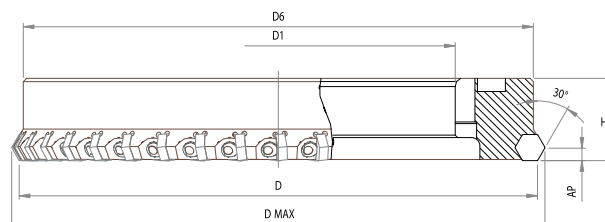
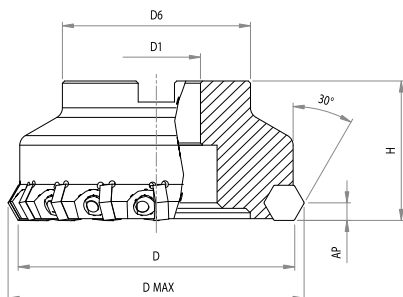
D : 80~200



D : 250~315

Axial rake angle : -6°

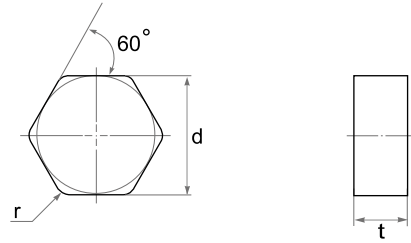
Radial rake angle : -7°



Type	Dimensions (mm)					Z	AP max	Insert
	D	D(max)	D ₁	D ₆	H			
SFKN 080-08-30 N5HXA	80	88.7	25.4	50	50	8	8	HNEN 090520 HNEN 090530 HNEN 090508 ANSN
SFKN 080-08-30 N5HX	80	88.7	27	58	50	8	8	
SFKN 100-10-30 N5HXA	100	108.7	31.75	60	50	10	8	
SFKN 100-10-30 N5HX	100	108.7	32	60	50	10	8	
SFKN 125-16-30 N5HXA	125	133.7	38.1	80	63	16	8	
SFKN 125-16-30 N5HX	125	133.7	40	85	63	16	8	
SFKN 160-20-30 N5HXA	160	168.7	50.8	99	63	20	8	
SFKN 160-20-30 N5HX	160	168.7	40	85	63	20	8	
SFKN 200-26-30 N5HXA	200	208.7	47.625	128.57	63	26	8	
SFKN 200-26-30 N5HX	200	208.7	60	140	63	26	8	
SFKN 250-30-30 N5HXA	250	258.7	160.02	-	50	30	8	
SFKN 315-40-30 N5HXA	315	323.7	215.02	-	50	40	8	

Dimensions (mm)	Spare parts		
D	Wedge	Wedge Screw	Wrench
80 - 315	 DT-SW16	 WS6	 LW3

HNEN



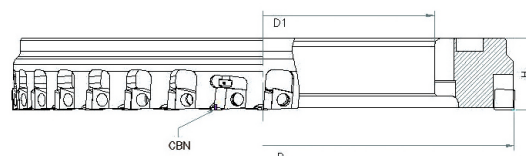
Turning & Milling

Type	Dimensions (mm)																						
	d	t	r	ST100	ST300	ST500	ST900	TC100	TC300	TM300	SD200	SZ200	SZ300	SN26	SN300	SN400	SN500	SN600	SN800	SN900	SW400	SW800	
ISO																							
HNEN 090520	16.20	5.56	2.0												●	●							
HNEN 090530	16.20	5.56	3.0												●	●							
HNEN 090508 ANSN	15.87	5.64	0.8												●	●			●				

FACE MILLING CUTTER

Turning & Milling

SFKP .. MF



Type	Dimensions (mm)					Insert
	D	D ₁	H	Ceramic	CBN	
SFKP 250-20-00 N4MF	250	160.02	50	18	2	SPCN120412(Ceramic)+CBN(Wiper)
SFKP 315-32-00 N4MF	315	215.02	50	28	4	SPCN120412(Ceramic)+CBN(Wiper)

Dimensions (mm)	Spare parts			
D	Wedge	Adjust Screw	Wedge Screw	Wrench
250 - 315	DT-DW01	AJM 5F	WS8	LW4

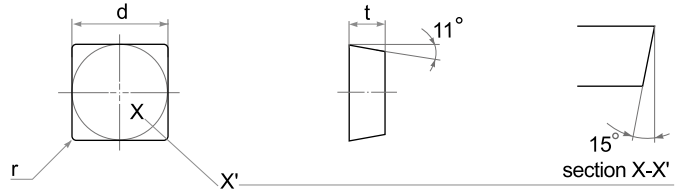
Recommended Cutting Condition for Gray Cast Iron

Process	Hardness (HB)	Cutting Speed V _c (m/min)	Feed f _z (mm/z)	Depth a _p (mm)
Finishing	190~210	200~800	0.08~0.15	0.1~0.5
Finishing	220~240	200~600	0.08~0.15	0.1~0.5
Finishing	250~280	200~400	0.08~0.15	0.1~0.5

Recommended Cutting Condition for Ductile Cast Iron

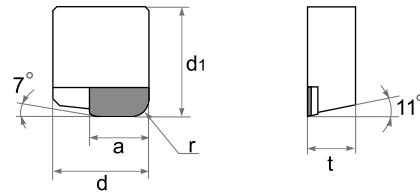
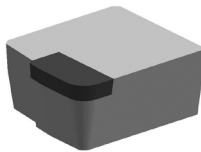
Process	Tensile Strength	Cutting Speed V _c (m/min)	Feed f _z (mm/z)	Depth a _p (mm)
Finishing	400~500	300~600	0.08~0.15	0.1~0.5
Finishing	500~700	200~500	0.08~0.15	0.1~0.5

SPCN .. T



Type		Dimensions (mm)			NEW																		
ISO	ASA	d	t	r	ST100	ST300	ST500	ST900	TC100	TC300	TM300	SD200	SZ200	SZ300	SN26	SN300	SN400	SN500	SN600	SN800	SN900	SW400	SW800
SPCN 120412 T15	SPCN 433 T15	12.70	4.76	1.2													●						

SPC .. ZZ

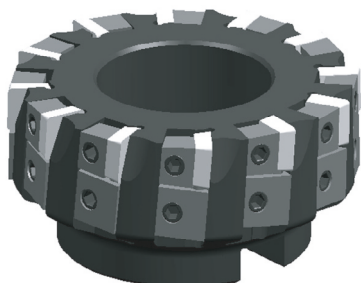


Type		Dimensions (mm)					PCBN	
ISO	ASA	d	d ₁	t	a	r	SBN1000	SBN2000
SPC 1206 ZZR2X	SPC 44 ZZR2X	12.70	14.50	6.35	7.80	2.0	●	

FACE MILLING CUTTER

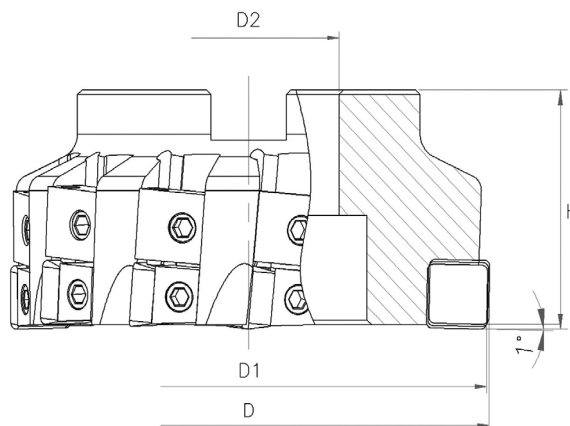
Turning & Milling

SFMS (MULTI-STEP) .. LRF



Axial rake angle : +5°

Radial rake angle : +6°

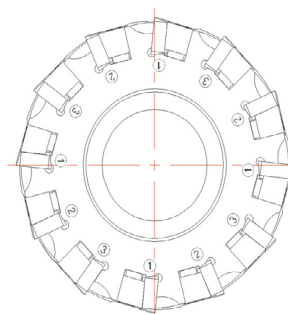


Type	Dimensions (mm)				Insert per set	⚙️	Insert
	D	D ₁	D ₂	H			
SFMS 80-09-P4N.LRF	76.20	75.20	25.40	47.60	3	9	SPCN 1204 □ □ T15
SFMS 100-12-P4N.LRF	101.60	100.60	38.10	47.60	3	12	
SFMS 125-15-P4N.LRF	127.00	126.00	38.10	47.60	3	15	
SFMS 160-18-P4N.LRF	152.40	151.40	50.80	47.60	3	18	

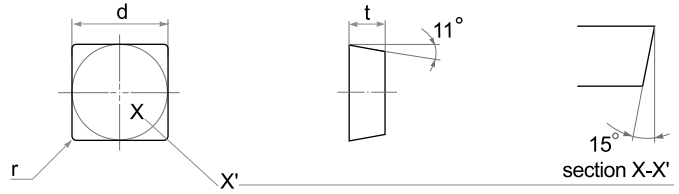
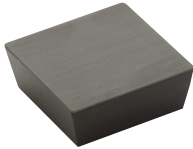
Dimensions (mm)	Spare parts				
D	Wedge	Wedge Screw	ADJ Wedge	ADJ Wedge Screw	Wrench
80 - 160	DT-SW14	WS6	DT-SW15	WS6	LW3

Recommended Cutting Condition for Gray Cast Iron

Process	Hardness (HB)	Cutting Speed V _c (m/min)	Feed f _z (mm/z)	Depth a _p (mm)	Surface Quality Ra(μm)
Light Rough & Finish	190~310	240~1,200	0.08~0.60	2.0~3.80	6.3~12.5



SPCN .. T

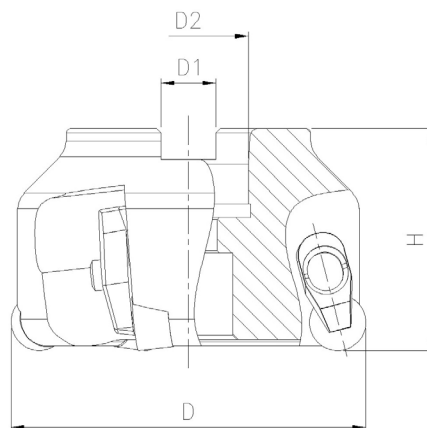


Type		Dimensions (mm)																						
ISO	ASA	d	t	r	ST100	ST300	ST500	ST900	TC100	TC300	TM300	SD200	SZ200	SZ300	SN26	SN300	SN400	SN500	SN600	SN800	SN900	SW400	SW800	
SPCN 120412 T15	SPCN 433 T15	12.70	4.76	1.2													●							
SPCN 120416 T15	SPCN 434 T15	12.70	4.76	1.6													●							

FACE MILLING CUTTER

Turning & Milling

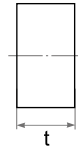
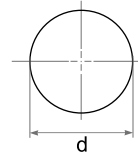
SFCN .. 00 .. R



Type	Dimensions (mm)				⚙️	Insert
	D	D1	D2	H		
SFCN 050-04-00 R4	50	10.4	22	50	4	RNGN 120400
SFCN 050-04-00 R4A	50.8	10.4	19.05	50	4	
SFCN 063-04-00 R4	63	10.4	22	50	4	
SFCN 063-04-00 R4A	63.5	10.4	19.05	50	4	
SFCN 080-05-00 R4	80	12.4	27	50	5	
SFCN 080-05-00 R4A	76.2	12.4	25.4	50	5	
SFCN 100-06-00 R4	100	12.7	32	50	6	
SFCN 100-06-00 R4A	101.6	12.7	31.75	50	6	
SFCN 050-04-00 R7	50	10.4	22	50	4	RNGN 120700
SFCN 050-04-00 R7A	50.8	10.4	19.05	50	4	
SFCN 063-04-00 R7	63	10.4	22	50	4	
SFCN 063-04-00 R7A	63.5	10.4	19.05	50	4	
SFCN 080-05-00 R7	80	12.4	27	50	5	
SFCN 080-05-00 R7A	76.2	12.4	25.4	50	5	
SFCN 100-06-00 R7	100	12.7	32	50	6	
SFCN 100-06-00 R7A	101.6	12.7	31.75	50	6	

Dimensions (mm)	Spare parts			
	Clamp	Clamp Screw	Spring	Wrench
D				
50 - 100	AMS6T	AOB-6S	SP5	LW3

RNGN

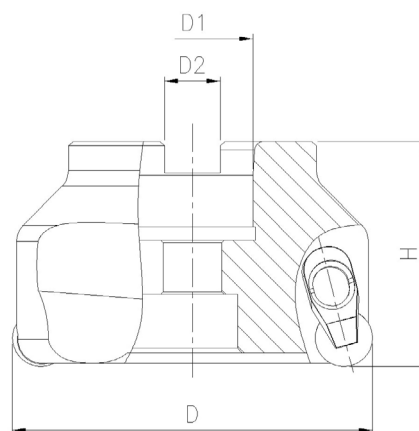


Type		Dimensions (mm)		Grade			
ISO	ASA	d	t	SW400	SW800	SN800	SN900
RNGN 120400	RNGN 43	12.7	4.76	●	●	●	●
RNGN 120700	RNGN 45	12.7	7.94	●	●	●	●

FACE MILLING CUTTER

Turning & Milling

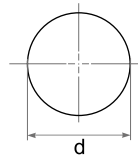
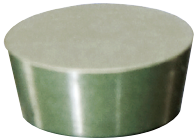
SFCP .. 00 .. R



Type	Dimensions (mm)				⚙️	Insert
	D	D1	D2	H		
SFCP 050-04-00 R4	50	10.4	22	50	4	RPGN 120400
SFCP 050-04-00 RA4	50.8	10.4	19.05	50	4	
SFCP 063-04-00 R4	63	10.4	22	50	4	
SFCP 063-04-00 R4A	63.5	10.4	19.05	50	4	
SFCP 080-05-00 R4	80	12.4	27	50	5	
SFCP 080-05-00 R4A	76.2	12.4	25.4	50	5	
SFCP 100-06-00 R4	100	12.7	32	50	6	
SFCP 100-06-00 R4A	101.6	12.7	31.75	50	6	

Dimensions (mm)	Spare parts			
	Clamp	Clamp Screw	Spring	Wrench
D				
50 - 100	AMS6T	AOB-6S	SP5	LW3

RPGN

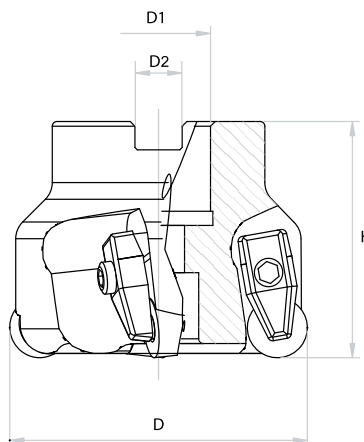


Type		Dimensions (mm)		Grade			
ISO	ASA	d	t	SW400	SW800	SN800	SN900
RPGN120400	RPGN 43	12.7	4.76		●	●	●

FACE MILLING CUTTER

Turning & Milling

SFXN



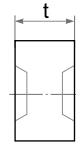
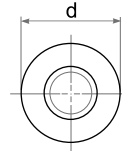
Type	Dimensions (mm)				⚙️	Insert
	D	D1	D2	H		
SFXN 050-03-00 RX7A	50	19.05	7.9	50	3	RNGX 1207 DP
SFXN 050-03-00 RX7	50	22	10.4	50	3	
SFXN 063-04-00 RX7A	63	19.05	12.7	50	4	
SFXN 063-04-00 RX7	63	22	10.4	50	4	
SFXN 080-05-00 RX7A	80	25.4	9.5	50	5	
SFXN 080-05-00 RX7	80	27	12.4	50	5	
SFXN 100-06-00 RX7A	100	31.75	12.7	50	6	
SFXN 100-06-00 RX7	100	32	14.4	50	6	

Dimensions (mm)	Spare parts			
	Clamp	Screw	Spring	Wrench
D				
50 - 100	SCL 5M	SLS4	SP4	LW3

Recommended Cutting Conditions

Work - Piece	Hardness (HB)	Cutting Speed Vc(m/min)	Feed fz(mm/z)	Depth ap(mm) max
Iron-base, Heat-resistant alloys	135~328	300~900	0.05~0.13	6.35
Cobalt-base, Heat-resistant alloys	150~425	270~1,200	0.05~0.13	6.35
Nickel base, Heat-resistant alloys	140~475	270~1,200	0.05~0.13	6.35
PH Stainless steels	135~450	520~700	0.08~0.10	6.35

RNGX .. DP

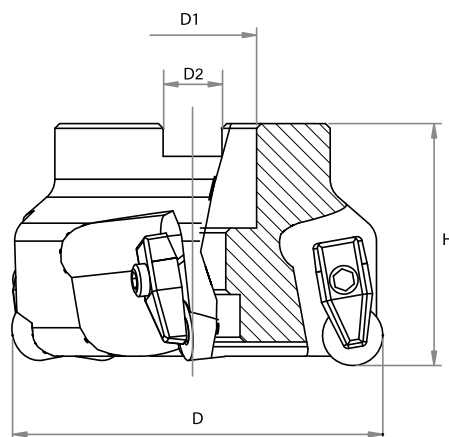
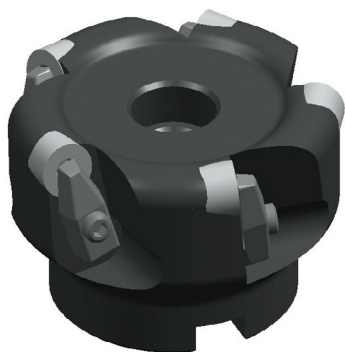


Type		Dimensions (mm)																					
ISO	ASA	d	t	ST100	ST300	ST500	ST900	TC100	TC300	TM300	SD200	SZ200	SZ300	SN26	SN300	SN400	SN500	SN600	SN800	SN900	SW400	SW800	
RNGX 1207 DP	RNGX 45 DP	12.70	7.94													●		●	●				

FACE MILLING CUTTER

Turning & Milling

SFXP



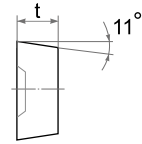
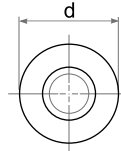
Type	Dimensions (mm)				Z	Insert
	D	D1	D2	H		
SFXP 050-03-00 RP4A	50	19.05	7.9	50	3	RPGX 1204 DP
SFXP 050-03-00 RP4	50	22	10.4	50	3	
SFXP 050-04-00 RP4A	50	19.05	7.9	50	4	
SFXP 050-04-00 RP4	50	22	10.4	50	4	
SFXP 063-04-00 RP4A	63	19.05	7.9	63	4	
SFXP 063-04-00 RP4	63	22	10.4	63	4	
SFXP 080-05-00 RP4A	80	25.4	9.5	50	5	
SFXP 080-05-00 RP4	80	27	12.4	50	5	
SFXP 100-06-00 RP4A	100	31.75	12.7	50	6	
SFXP 100-06-00 RP4	100	32	14.4	50	6	

Dimensions (mm)	Spare parts			
	Clamp	Screw	Spring	Wrench
D				
50 - 100	SCL 5M	SLS4	SP4	LW3

Recommended Cutting Conditions

Work - Piece	Hardness (HB)	Cutting Speed Vc(m/min)	Feed fz(mm/z)	Depth ap(mm) max
Iron-base, Heat-resistant alloys	135~328	300~900	0.05~0.13	6.35
Cobalt-base, Heat-resistant alloys	150~425	270~1,200	0.05~0.13	6.35
Nickel base, Heat-resistant alloys	140~475	270~1,200	0.05~0.13	6.35
PH Stainless steels	135~450	520~700	0.08~0.10	6.35

RPGX .. DP



Turning & Milling

Type		Dimensions (mm)																					
ISO	ASA	d	t	ST100	ST300	ST500	ST900	TC100	TC300	TM300	SD200	SZ200	SZ300	SN26	SN300	SN400	SN500	SN600	SN800	SN900	SW400	SW800	
RPGX 1204 DP	RPGX 43 DP	12.70	4.76													●			●				