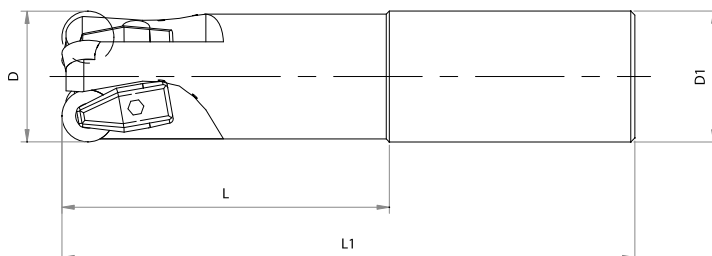


BALL ENDMILL

Turning & Milling

SEXP



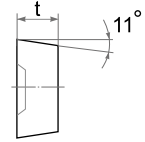
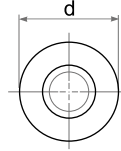
Type	Dimensions (mm)				Gear Icon	Insert
	D	D1	L	L1		
SEXP 032-02-80140 X4	32	32	80	140	2	RPGX 1204 DP
SEXP 032-03-40100 X4A	32	31.75	40	100	3	
SEXP 032-03-40100 X4	32	32	40	100	3	
SEXP 032-03-80140 X4A	32	31.75	80	140	3	
SEXP 032-03-80140 X4	32	32	80	140	3	
SEXP 038-03-50100 X4A	38	38.1	50	100	3	
SEXP 038-03-50100 X4	38	32	50	100	3	
SEXP 038-03-90140 X4A	38	38.1	90	140	3	
SEXP 038-03-90140 X4	38	32	90	140	3	

Dimensions (mm)	Spare parts			
	Clamp	Screw	Spring	Wrench
D				
32 - 38	SCL 5M	SLS4	SP4	LW3

Recommended Cutting Conditions

Work - Piece	Hardness (HB)	Cutting Speed Vc(m/min)	Feed fz(mm/z)	Depth ap(mm) max
Iron-base, Heat-resistant alloys	135~328	300~900	0.05~0.13	6.35
Cobalt-base, Heat-resistant alloys	150~425	270~1,200	0.05~0.13	6.35
Nickel base, Heat-resistant alloys	140~475	270~1,200	0.05~0.13	6.35
PH Stainless steels	135~450	520~700	0.08~0.10	6.35

RPGX .. DP



Turning & Milling

Type		Dimensions (mm)																					
ISO	ASA	d	t	ST100	ST300	ST500	ST900	TC100	TC300	TM300	SD200	SZ200	SZ300	SN26	SN300	SN400	SN500	SN600	SN800	SN900	SW400	SW800	
RPGX 1204 DP	RPGX 43 DP	12.70	4.76													●			●				