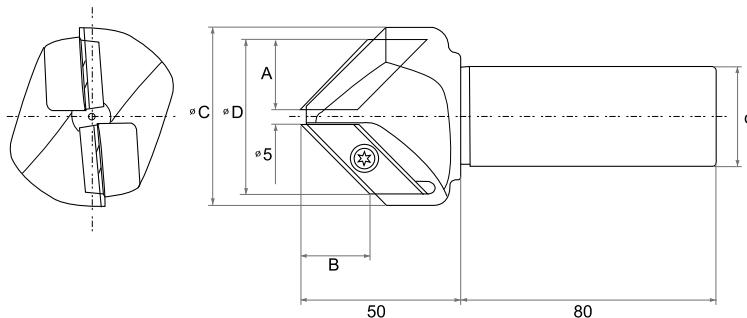
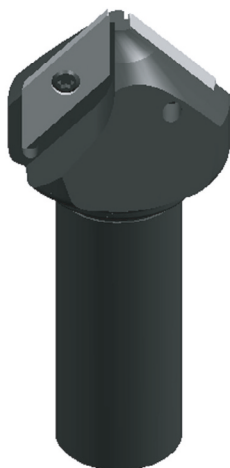


## CHAMFER CUTTER

Turning & Milling

### CSC

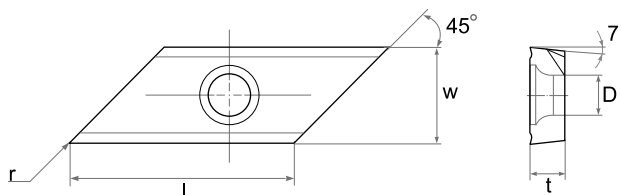


Type	Dimensions (mm)						⚙️	Insert	Spare parts	
	θ	A	B	ØC	ØD	d			Screw	Wrench
CSC 0503 1R-30	30°	14.5	25.5	40	34.0	32.0	1	XCET 310404ER	SDT050	T-20
CSC 0503 1R-30-A	30°	14.5	25.5	40	34.0	25.4	1			
CSC 0503 1R-45	45°	20.5	20.5	56	46.0	32.0	2			
CSC 0503 1R-45-A	45°	21.0	21.0	56	46.9	25.4	2			
CSC 0503 1R-60	60°	25.5	14.5	72	55.0	32.0	2			
CSC 0503 1R-60-A	60°	25.5	14.5	72	56.0	25.4	2			

### Recommended Cutting Conditions

Work piece	Carbon Steel (S55C) Stainless Steel 250HB ≥ Cast Iron (FC250)	Alloy Steel (SCM440) 300HB ≥ High Alloy Steel (SKD61) 300HB ≥
Feed (mm/tooth)	0.1~0.25	0.1~0.2
rpm	3000(1000~7000)	

### XCET



Type	Dimensions (mm)					Grade		
	ISO	l	w	t	D	r	TX515	TX520
XCET 310404 ER	22.00	12.70	4.50	5.60	0.4		●	●
XCET 310408 ER	22.00	12.70	4.50	5.60	0.8		●	

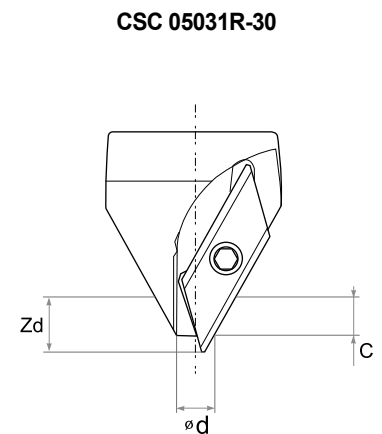
\*SCW200 is a coated carbide grade for P20 range machining.



### TECHNICAL DATA

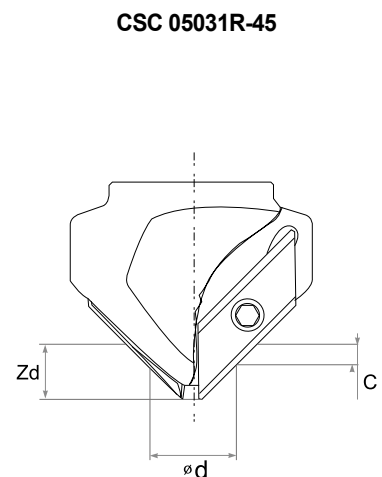
#### 30° Chamfer

Hole Dia Ød	Dimensions (mm)							
	0.5	1	1.5	2	2.5	3	3.5	4
5	0.8	1.3	1.8	2.3	2.8			
6	1.7	2.2	2.7	3.2	3.7			
6.8	2.4	2.9	3.4	3.9	4.4			
8	3.4	3.9	4.4	4.9	5.4			
8.5	3.8	4.3	4.8	5.3	5.8			
10	5.1	5.6	6.1	6.6	7.1	7.6	8.1	8.6
10.2	5.3	5.8	6.3	6.8	7.3	7.8	8.3	8.8
12	6.9	7.4	7.9	8.4	8.9	9.4	9.9	10.4
16	10.3	10.8	11.3	11.8	12.3	12.8	13.3	13.8
17.5	11.6	12.1	12.6	13.1	13.6	14.1	14.6	15.1
20	13.7	14.2	14.7	15.2	15.7	16.2	16.7	17.2
21	14.6	15.1	15.6	16.1	16.6	17.1	17.6	18.1
24	17.2	17.7	18.2	18.7	19.2	19.7	20.2	20.7
30	22.4	22.9	23.4	23.9	24.4	24.9	25.4	
33	24.9	25.4						



#### 45° Chamfer

Hole Dia Ød	Dimensions (mm)							
	0.5	1	1.5	2	3	4	5	
5	0.7	1.2	1.7	2.2	3.2			
6	1.2	1.7	2.2	2.7	3.7			
6.8	1.6	2.1	2.6	3.1	4.1			
8	2.2	2.7	3.2	3.7	4.7			
8.5	2.4	2.9	3.4	3.9	4.9			
10	3.2	3.7	4.2	4.7	5.7	6.7	7.7	
10.2	3.3	3.8	4.3	4.8	5.8	6.8	7.8	
12	4.2	4.7	5.2	5.7	6.7	7.7	8.7	
14	5.2	5.7	6.2	6.7	7.7	8.7	9.7	
16	6.2	6.7	7.2	7.7	8.7	9.7	10.7	
17.5	6.9	7.4	7.9	8.4	9.4	10.4	11.4	
20	8.2	8.7	9.2	9.7	10.7	11.7	12.7	
21	8.7	9.2	9.7	10.2	11.2	12.2	13.2	
24	10.2	10.7	11.2	11.7	12.7	13.7	14.7	
30	13.2	13.7	14.2	14.7	15.7	16.7	17.7	
33	14.7	15.2	15.7	16.2	17.2	18.2	19.2	
36	16.2	16.7	17.2	17.7	18.7	19.7		
42	19.2	19.7	20.2					



## CHAMFER CUTTER

### 60° Chamfer

Hole Dia Ød	Dimensions (mm)						
	0.5	1	1.5	2	2.5	3	3.5
5	0.6	1.1	1.6	2.1			
6	0.9	1.4	1.9	2.4			
6.8	1.1	1.6	2.1	2.6			
8	1.4	1.9	2.4	2.9			
8.5	1.6	2.1	2.6	3.1			
10	2.0	2.5	3.0	3.5	4.0	4.5	5.0
10.2	2.1	2.6	3.1	3.6	4.1	4.6	5.1
12	2.6	3.1	3.6	4.1	4.6	5.1	5.6
16	3.7	4.2	4.7	5.2	5.7	6.2	6.7
17.5	4.2	4.7	5.2	5.7	6.2	6.7	7.2
20	4.9	5.4	5.9	6.4	6.9	7.4	7.9
21	5.2	5.7	6.2	6.7	7.2	7.7	8.2
24	6.1	6.6	7.1	7.6	8.1	8.6	9.1
30	7.8	8.3	8.8	9.3	9.8	10.3	10.8
33	8.7	9.2	9.7	10.2	10.7	11.2	11.7
36	9.5	10.0	10.5	11.0	11.5	12.0	12.5
38	10.1	10.6	11.1	11.6	12.1	12.6	13.1
42	11.2	11.7	12.2	12.7	13.2	13.7	14.2
46	12.4	12.9	13.4	13.9	14.4		
48	13.0	13.5	14.0	14.5			
52	14.1						

